



Zipillow

Created by:
Natalie Santini from Sew aHungry Hippie

www.janome.com

Supplies:

- Various scraps to cover (2) 17" square areas
- Lining fabric (2) 16" pieces
- Batting (2) 19" pieces
- (1) 15" zipper / trim to size
- (2) scrap pieces for zipper tabs
- (1) 15-16" pillow form or make your own

Notes:

- RST = Right Sides Together
- RS= Right Side
- RSO = Right Side Out
- SA= Seam Allowance
- WST = Wrong Sides Together
- WS= Wrong Side
- Seam allowance is 1/4"

Tools: patchwork sewing foot (helpful), sewing clips and/or pins, ruler, rotary cutter, iron, and your favorite thread & sewing machine. Sewn using a Janome Skyline S7 sewing machine. *Optional: starch (I make my own with 1:1 mixture of vodka and water!)*



Please read through all instructions before beginning this project. Full video walk through here: <https://bit.ly/34TEzsQ>

Cutting Instructions

(Measurements width x height) This method is very loose on “laws”. I love improv for this very reason! I cut my scrap pile into manageable size pieces, roughly rectangular 2 to 3” wide and around 4-6” in length. I do not measure anything - the end projects looks BETTER if you don’t. As shown in the video demonstration, the pieces are randomly selected and sewn together into sections. I’m using Kona solids for a bold and graphic effect. Feel free to use ANY scraps you have. Experimental fun is the key to growth, so don’t let fabric choice hold you back.

- Cut (2) lining pieces 16” x 16” (cotton fabric)
- Cut (2) zipper tabs 2” x 1.5”

Assembly Instructions

1. Sew scraps together piece by piece along longer edge, RST. Press to darker side OR press seams open. Keep repeating this process until you have a big ol’ pile ready to piece into sections.



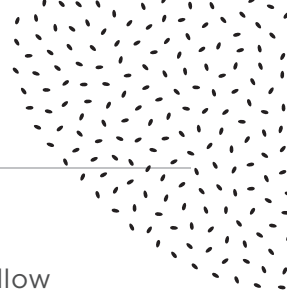
Diagram A

repeat a gajillion times

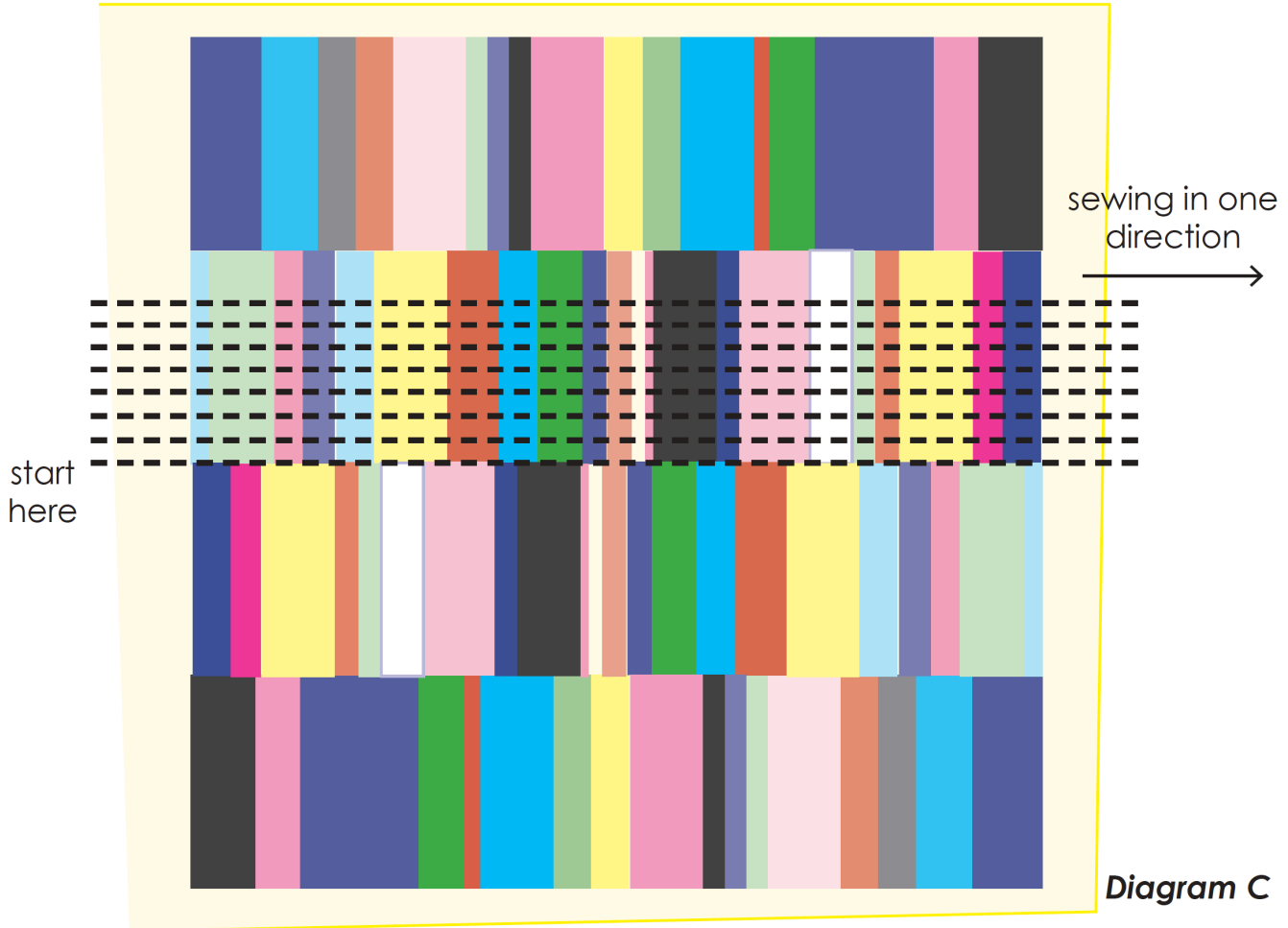
Pieces will not be uniform like below diagram, they will be different widths and lengths; showing this way for clarity. Trim when sewing sections together.



Diagram B



2. Sew strips together into larger sections. Sew sections together to form a Front Pillow piece roughly 17" sq, and a Back Pillow Piece 17" sq, we will trim after quilting. This is the bulk of the video. so take a minute to watch if you need a boost of confidence.



3. Place 19" sq piece of batting /wadding on WS of Front Pillow piece and if you wish, spray baste in place. (I don't baste because this is a small project, but do it if you've never quilted before.) Starting in the middle on the RS, quilt straight lines across entire surface using width of sewing foot as a guide. Do not pull or push fabric, let the feed dogs do the work. Make sure to sew in one direction to help prevent wonkiness. **Video time stamp 8:36.**



- Repeat for back of pillow. Trim both front and back to 16" square once quilting is complete. Have fun with this part, it's super relaxing if you put on a podcast or an audio book and just "sew & chill". The worst thing to do is rush yourself.

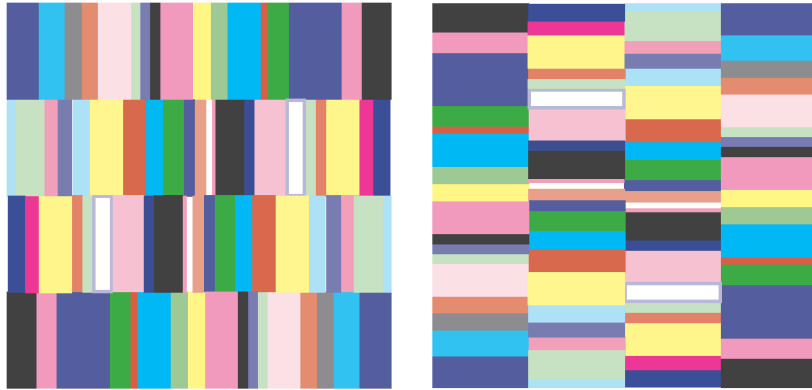


Diagram D

Play with orientation as well. It's a square so anyway is the right way.

- Trim zipper to exactly 15" (for our 16" pillow). I like to cut off the metal zipper stop so I don't accidentally sew over it and break my needle.

Place zipper tabs WS up and fold short ends to meet in center, then fold again and press. Slide each short end of zipper into zipper tab to touch fold, sew along open end. These lend a nice finish to the zipper with zero puckered corners. See Diagram E. Trim tabs flush with zipper tape.

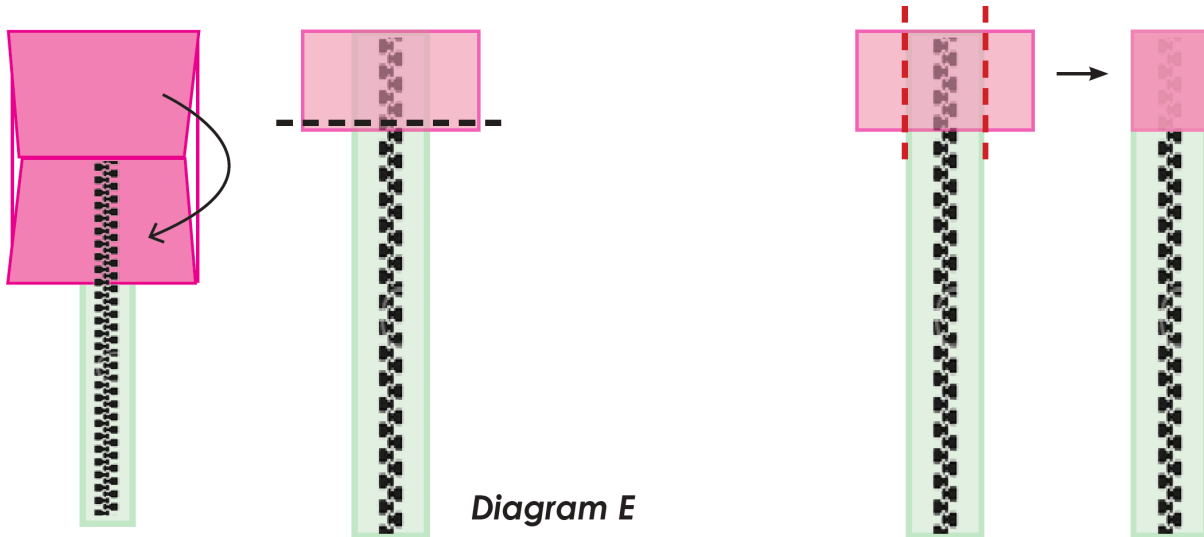


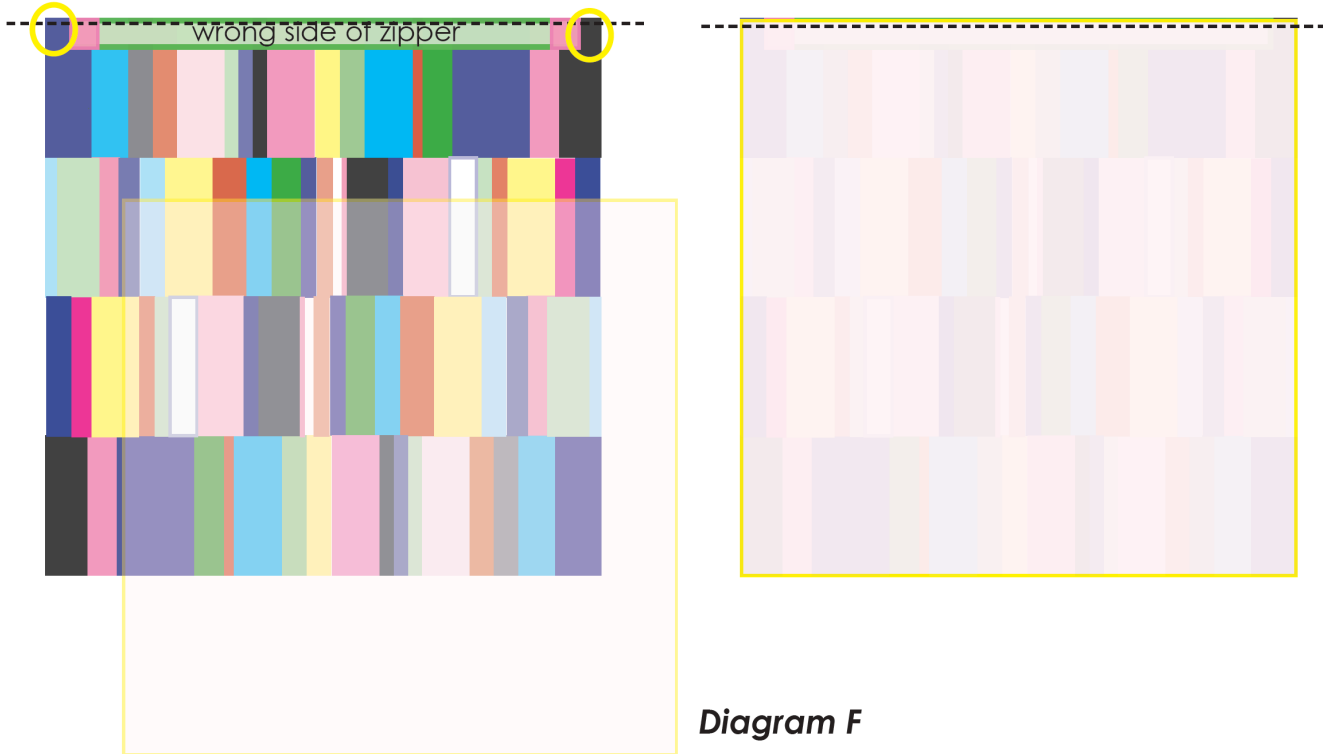
Diagram E

- Place back of pillow on work surface and place zipper on top, RST and centered. There should be a finger width space at each short end of zipper when compared to pillow (yellow circles in Diagram below). Baste zipper in place. **Video time stamp 15:18.**

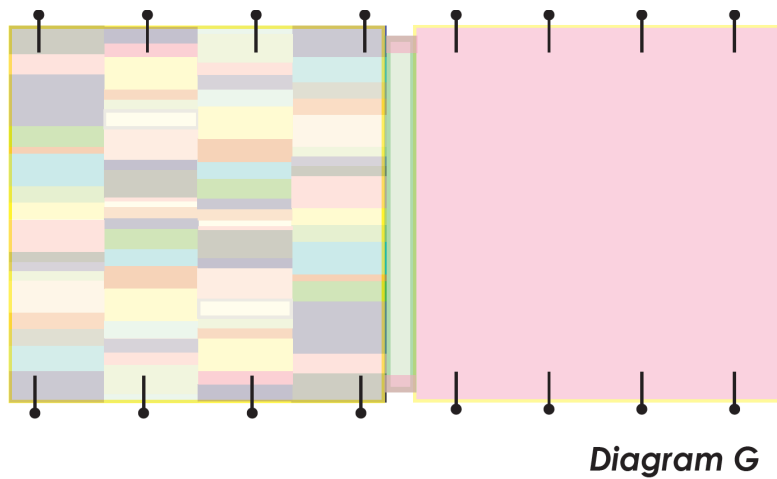
Zipillow



Place one lining piece RST matching edges, pin in place. Sew exactly on basted stitches to attach lining piece. One side of the pillow is done. Press SA back and top stitch. Repeat for remaining front of pillow and lining piece. **Video time stamp 15:52.**



7. Open the zipper. Place both exteriors of pillow RST and pin in place. Place both linings RST and pin in place. Check everything is flush, trim if necessary.





8. Sew around perimeter of pillow leaving an opening at the bottom lining of approx 6". When sewing near the zipper tabs, you'll be sewing right next to them, not ON them; this prevents puckered corners.

They will lay toward the exterior while sewing. It's okay to lift your sewing foot when in this area if it's thick. You can also use a walking foot. **Video time stamp 19:00.**

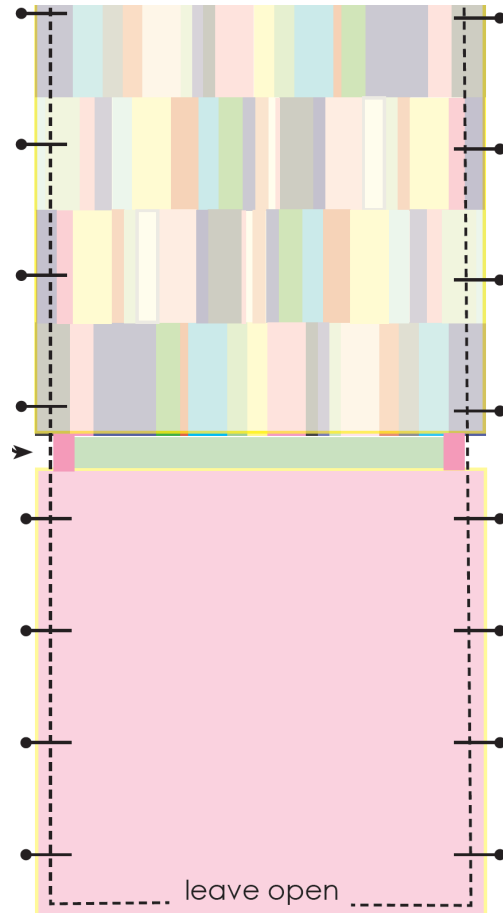


Diagram H

9. Trim corners. Turn pillow through zipper opening RSO. Check all seams and press well. Push with fervor on those zipper tabs to get them popped out correctly. Sew opening in lining closed and tuck inside.

Insert pillow form and zip shut. WELL DONE!

Remember the full walk-through video is here for you! [LINKv](#)