

# PINWHEEL BAG

Created By: Sam Fung Janome Educator



Finished bag measures 12" tall x 6½" square bottom

## Supplies Needed:

- Janome Horizon Memory Craft 9480 Sewing Machine
- Janome red tip needle # 14
- Janome ¼" foot (*optional*)
- Janome Ditch Stitching foot (*optional*)
- ⅓ yd Quilter's cotton fabric 44"wide in light color
- ⅓ yd Quilter's cotton fabric 44" wide in dark color
- 1 yd lining fabric, 44" wide
- ⅔ yd fusible quilt batting, 44" wide
- ⅓ yd fusible interfacing, 44"wide
- 1½ yds. strap webbing, 1" wide
- all purpose thread
- 1- ¾" magnetic snap closure
- disappearing fabric pen/chalk
- ruler
- sharp scissors with point
- straight pins
- steam iron

- One strip measuring 8¾" X 12⅝" from lining fabric for pocket
- Four strips measuring 4¾" X 19¾" from fusible quilt batting
- One rectangle measuring 8¾" X 12⅝" from fusible interfacing for pocket
- Cut webbing in half crosswise providing 2 strap handles, each measuring 24".

## Outer Fabric:

1. The contracting strips of fabric will be labeled **A** for the lighter color and **B** for the darker color

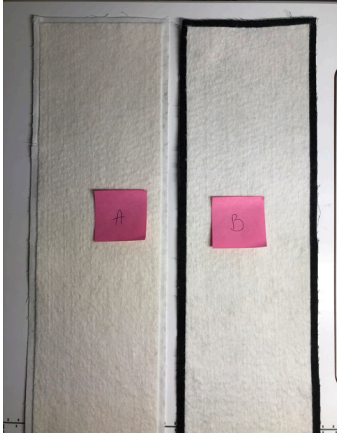


## Measure and Cut the Following Right Angled Strips:

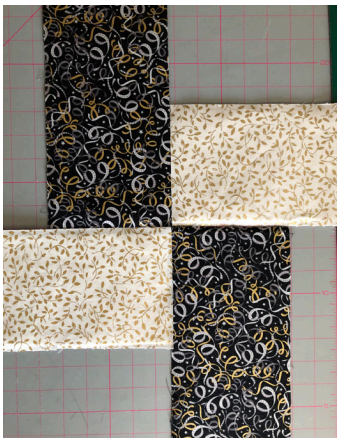
- Two strips measuring 6" X 21" from light color fabric
- Two strips measuring 6" X 21" from dark color fabric
- Four strips measuring 5¼" X 20¼" from lining fabric

# PINWHEEL BAG

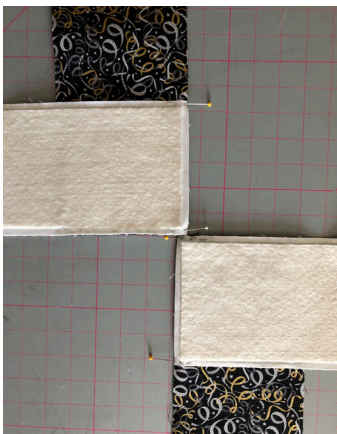
2. Following the fleece manufacturers instructions, fuse the batting strips to the wrong side of the fashion fabric strips.



3. In a pinwheel fashion, position all 4 fabric strips with the right sides facing up.



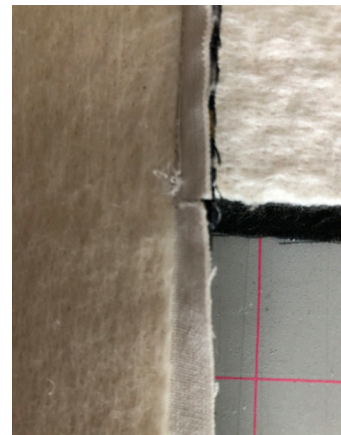
4. With right sides facing, flip piece **A** onto piece **B**. Stitch together along short edge of piece **A** following a  $\frac{1}{4}$ " seam. On the top piece you are sewing on the right-side seam, and bottom pieces you are sewing the left side seam.



5. Press seams open. With right sides facing up, lay out on table as in step 3. Lift the bottom pair of **A & B** pieces over the top matching center intersection. Sew across both short **B** pieces along the bottom seam.



6. Open with the flat wrong side facing you, with the point of the scissors clip both pieces of fabric to the batting where they are sewn together.



# PINWHEEL BAG

7. Open assembly flat with the right sides facing you, take piece **B** and place on top of piece **A**. Sew starting at the seamed, clipped edge up to where the batting ends.



Press seams open.

8. Working clockwise take piece **B** and stitch to **A** up to batting edge just like previous step.

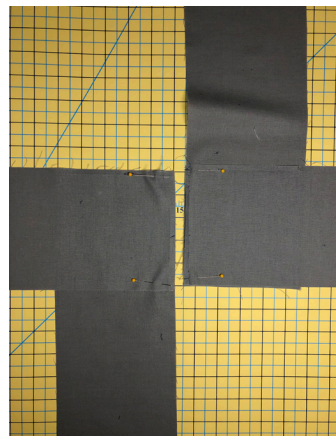


9. Continue clockwise until you have the remaining 2 seams sewn together.



## Lining:

1. When laying out the lining strips make sure the vertical strips are on the bottom and the horizontal are on top creating a squared-off bag bottom. Follow the previous steps 3-7 and only sewing the first 3 strips and leaving the last one open to allow easy access for attaching the pocket.



2. Fuse interfacing to wrong side of pocket fabric.
3. With the right side up, and the shorter 8 3/4" on top and bottom, fold pocket in half. Using a plate or cup draw a small curve on the upper corners.



# PINWHEEL BAG

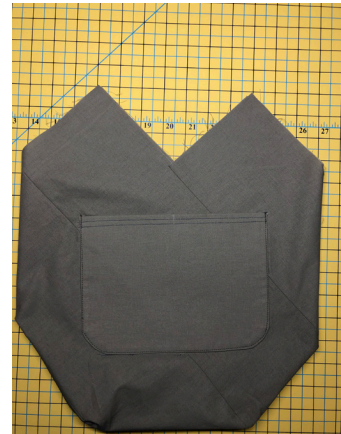
4. Sew up the side seams leaving an approximate 3" space on top for turning. Clip curves clip corners.



5. Turn right side out and press folding opening closed. Sew 2 rows of stitching across the top of the pocket straight edge.



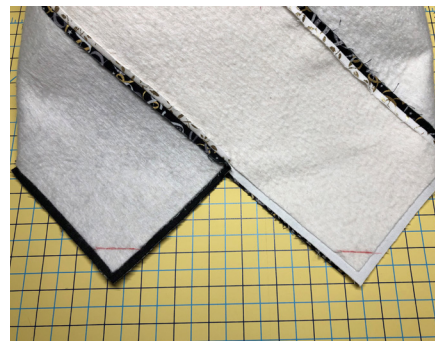
6. Mark center top of pocket. On the lining center pocket 2<sup>3</sup>/<sub>8</sub>" down from the top 2nd seam, making sure that the top 3 points are straight across (or your pocket will come out lopsided when the seams are all sewn) and sew pocket in place closing up opening.



7. With right sides together sew up the last seam leaving an opening on the side. Press seam open.

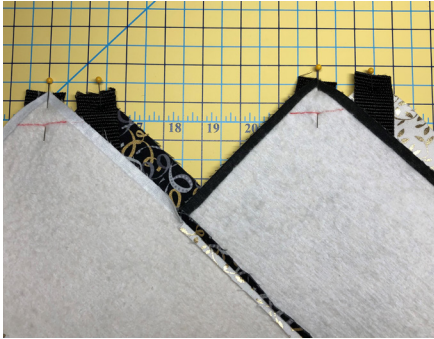
## Assembly:

1. At top edge, measure and mark a line 1" down from all 4 points.



# PINWHEEL BAG

2. Pin webbing to the right side with the cut edge across the top. Each piece of webbing will stretch from piece **A** to **B**.



3. Sew webbing in place using drawn line as a guide.



4. Attach magnetic snap about 1 1/2" from the lower edge of the lining on the top V, following manufacturer's instructions.



5. With the right sides together, pin lining and outer bag together matching up seams. Sew around top edge of bag using a 1/2" seam allowance. Clip the V section to the stitching line. Turn bag inside out and press around the sewn seams.
6. Top stitch around top by using a seam guide or a ditch stitching foot and moving the needle all the way over to the left position.
7. Hand sew side opening of lining closed.

