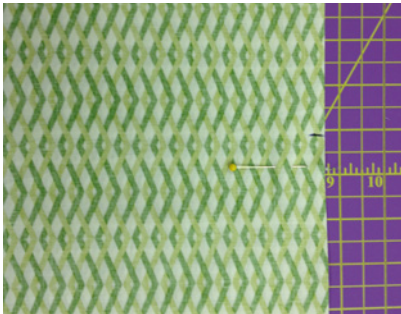


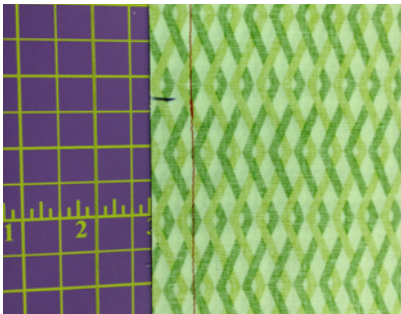
Inserting a Zipper without a Zipper Foot

1. Prepare fabric by marking on the wrong side of the fabric, where the zipper will end.



2. Starting at the top of the seam allowance use a basting stitch (D) and sew to your mark. Back stitch.

3. Change the stitch length to a shorter stitch (B) and finish sewing the rest of the seam.



4. Press seams open.



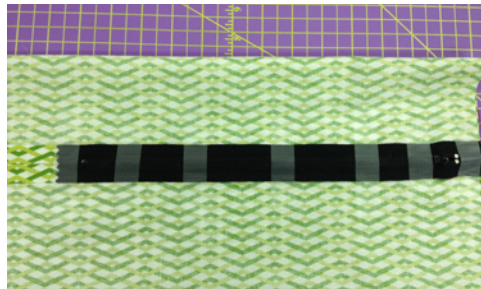
5. Take zipper and center the zipper teeth on the seam with the wrong side facing you.



Inserting a Zipper without a Zipper Foot

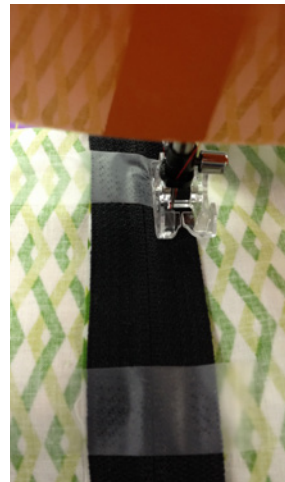
6. Use scotch tape to hold zipper in place.

7. Change to left needle position (E). Place back side of zipper teeth against the left side of foot. Sew down the length of the zipper, stopping at the zipper stop.

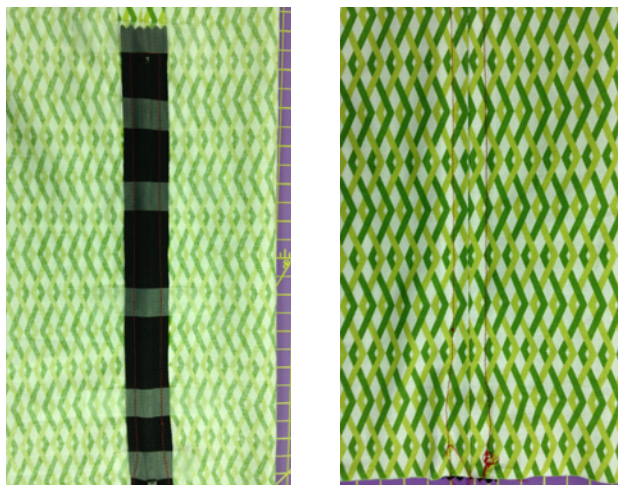


8. Put the needle down in the fabric and pivot. Sew across the end of the zipper, approximately 5/8" and stop with the needle down in the fabric.

9. Sew up the remaining side of the zipper. Back stitch when you reach the top.



10. Remove tape, turn inside out.



11. On right side, use a seam ripper and very carefully open up seam allowance where the zipper is sewn.

For teaching purposes we used a contrasting zipper and thread. For an actual zipper application, use a zipper and thread that matches your fabric.

