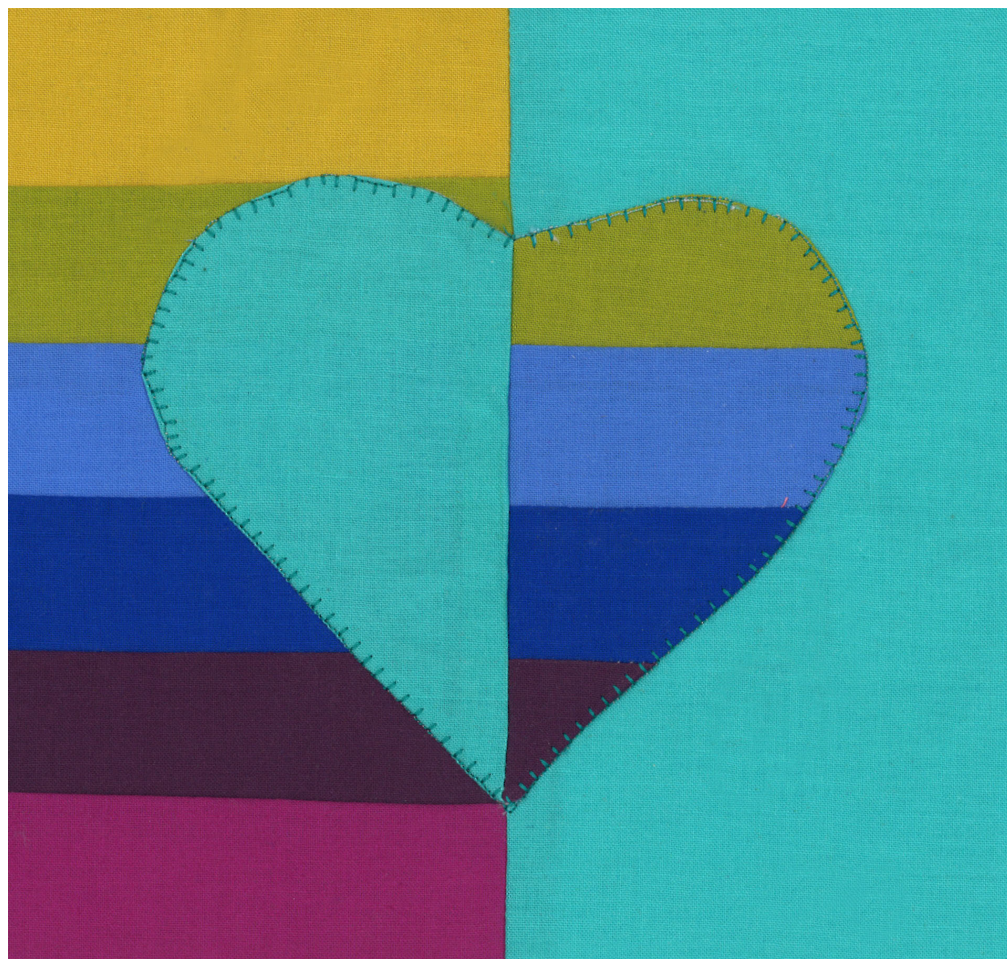


Kaye Wood

Heart Block



JANOME

WHAT'S NEXT

— a story in every stitch —

by Kaye Wood
www.kayewood.com



Fabric and Notions:

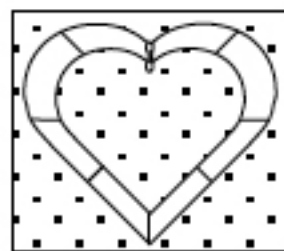
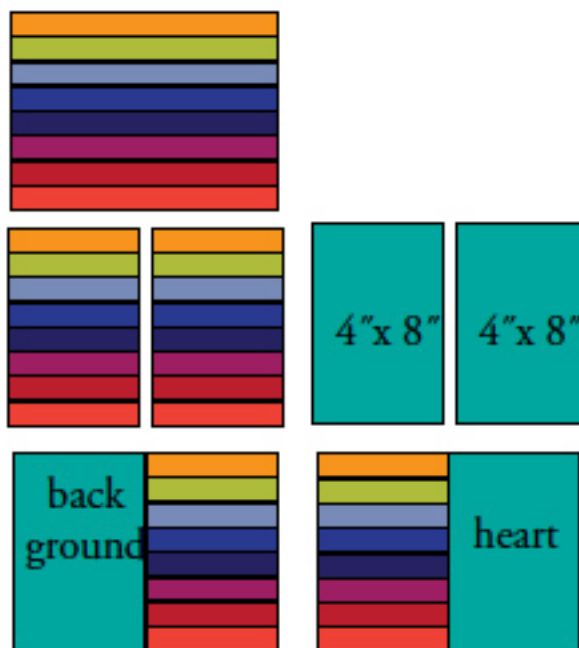
- View & Do Heart Shape
- 7 fabrics of your choice
- Light weight interfacing

Instructions:

- Cut 1 1/2" x 8" strips of six fabrics.
- Sew six fabric pieces together into a strip set.
- Cut this strip set into two 4" x 8" pieces.
- Cut turquoise solid into two 4" x 8" pieces.
- Sew one of the 4" strip set pieces to a solid 4" turquoise piece. This piece will measure 7 1/2" x 8".
- Sew the second of the 4" strip pieces (upside down and to the right hand side of the turquoise piece).

Face this piece with interfacing:

- Trace around a 4" and a 2" Heart Shape on the light weight interfacing on fold.
- The 2" Heart is the sewing line and the 4" Heart Shape is the cutting line.
- Center the interfacing, right sides together, on this piece.
- Sew along the 2" drawn heart line.
- Trim the seam allowances.
- Cut the 4" drawn line.
- Turn the heart right side out.
- Press



www.janome.com

JANOME
WHAT'S NEXT

by Kaye Wood
www.kayewood.com

- Center the heart onto the background piece, matching seamlines.
- Line up the same color strips on both the background and the heart.
- Sew with a machine blanket stitch.
- Trim the block to 6 1/2".



www.janome.com

JANOME
WHAT'S NEXT