

Donna Morton Fall Cactus Block



JANOME

WHAT'S NEXT

— a story in every stitch —

by Donna Morton
www.snipandstitch.com



Supplies:

- 7" x 7" background fabric (Gold)
- 5" x 3 3/4" rectangle applique fabric for center cactus and 4 buds (Lava)
- 4 3/4" x 5" rectangle applique fabric for leaves (Avocado)
- Terial Magic (or several coats of heavy duty spray starch)
- Fabric glue stick
- Light and dark green machine embroidery thread
- Orange machine embroidery thread
- Purple machine embroidery thread
- Light-weight bobbin thread
- Tear Away Stabilizer

Instructions:

1. Prepare appliqué fabrics for cutting using your Artistic Edge Cutter by spraying on the wrong side with Terial Magic. Let it soak in a few minutes and then iron dry.

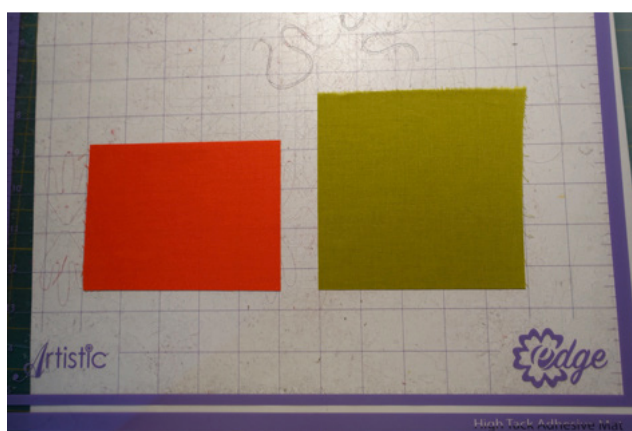


www.janome.com

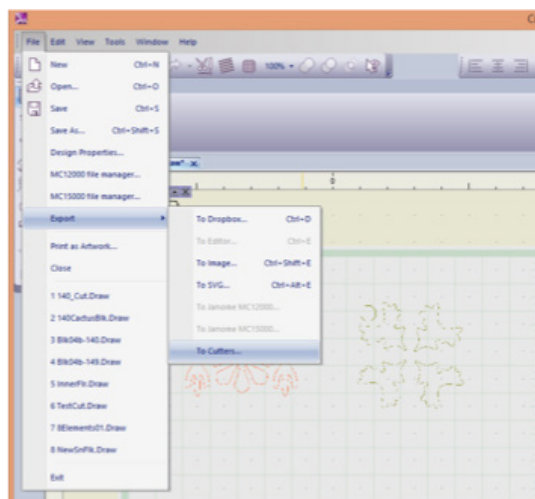
JANOME
WHAT'S NEXT

by Donna Morton
www.snipandstitch.com

2. Open the cutting file (140_Cut.Draw) in Artistic Simple Cut (Ver 7.1) or Artistic Sewing Suite (Ver 7.1).
3. Position prepared appliqué fabrics on your High Tack Mat.



4. Set up your Edge Cutter. Use the Yellow Blade with a depth of 4 and load the mat. You are now ready to pre-cut your appliqué shapes.
5. Select File>Export>To Cutters

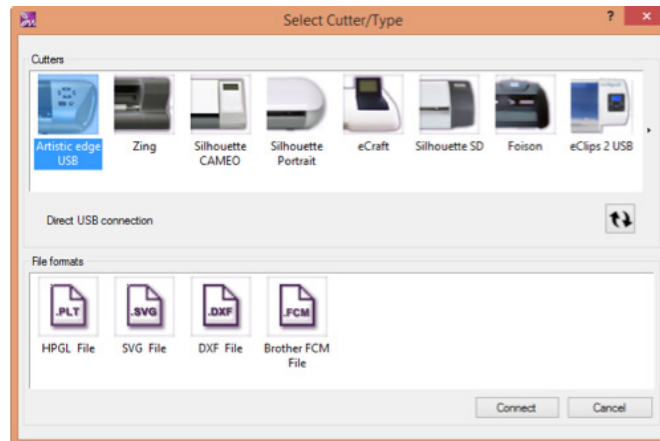


www.janome.com

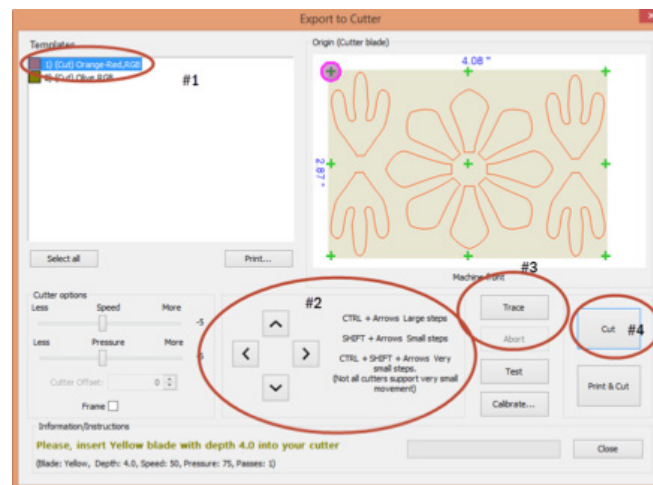
JANOME
WHAT'S NEXT

by Donna Morton
www.snipandstitch.com

6. When the Select Cutter/Type dialogue opens, select Artistic Edge from the available cutters (USB connection shown) and click on Connect.



7. The Export to Cutter dialogue opens.
8. In the Templates area, select the first color in the list (#1).



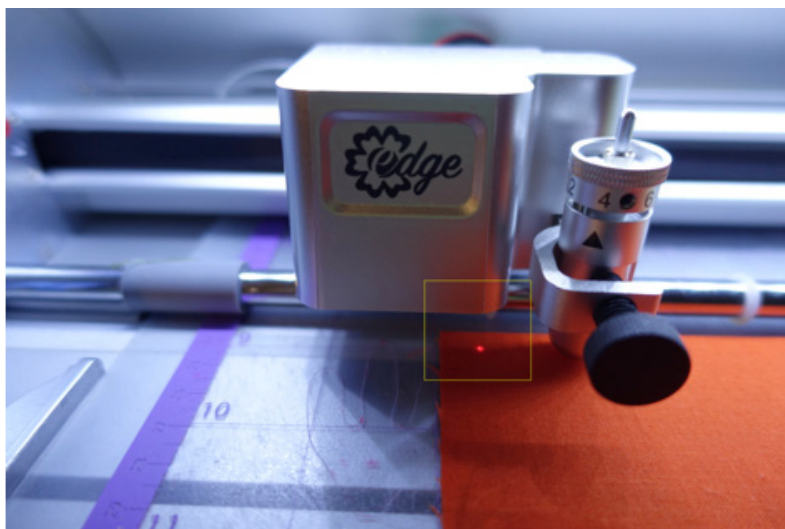
9. Do a Trace (#3) to ensure the laser light is about 1/2\" data-bbox="70 755 892 825"/>

www.janome.com

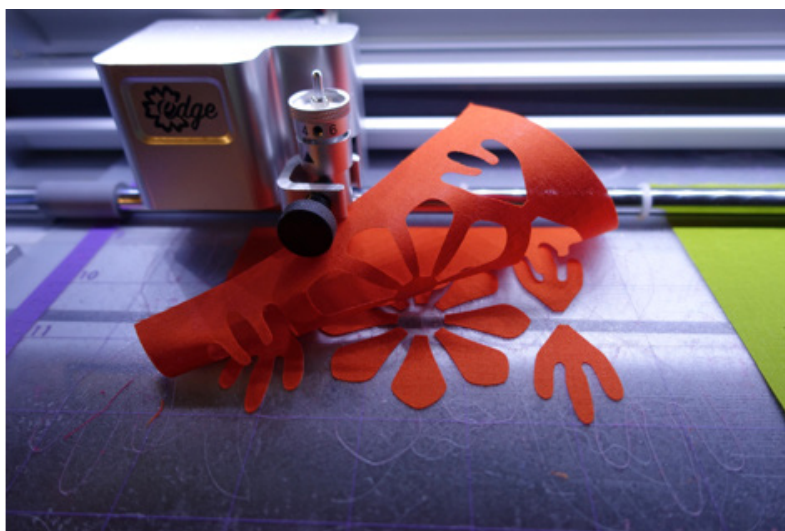
JANOME
WHAT'S NEXT

by Donna Morton
www.snipandstitch.com

11. Position of Laser Light:



12. Cut Appliqué Pieces:

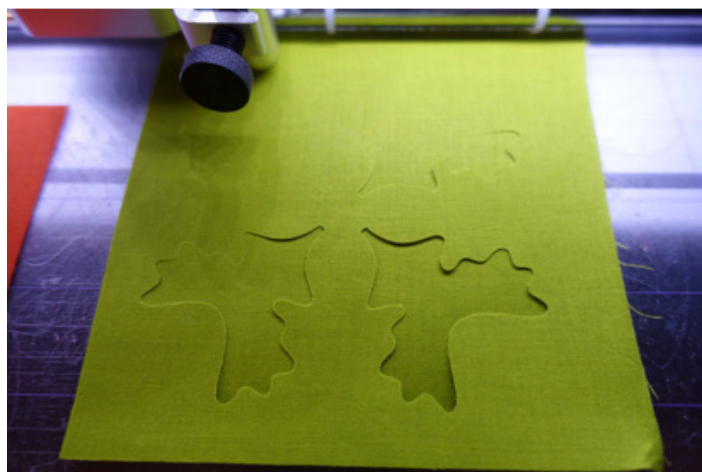
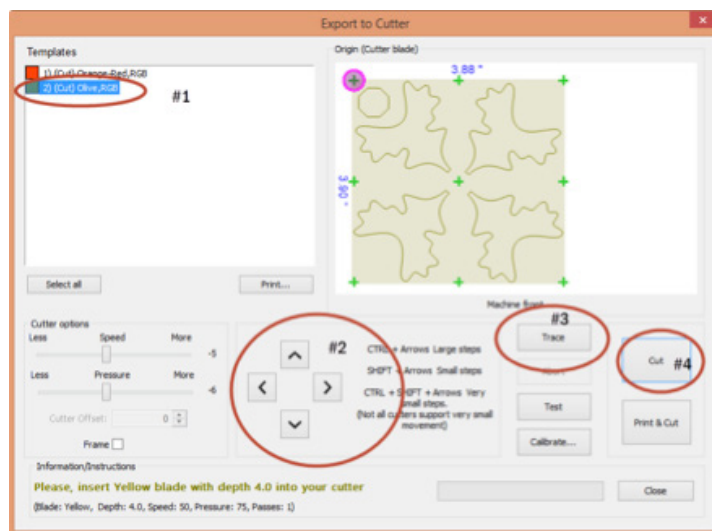


www.janome.com

JANOME
WHAT'S NEXT

by Donna Morton
www.snipandstitch.com

13. Repeat steps 6 - 13 to cut the leaves.



14. Set up your machine for machine embroidery and load the embroidery design. Hoop a piece of Tear Away Stabilizer, center the 7" x 7" square background fabric in the hoop. Use the basting function to hold fabric in place.

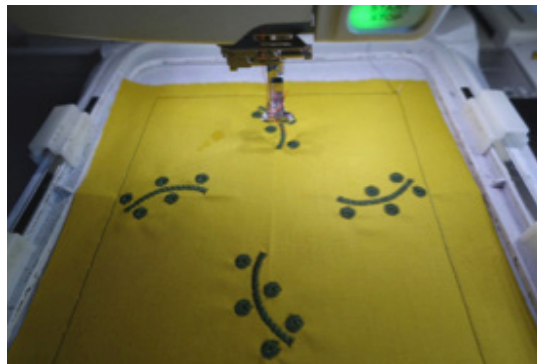
www.janome.com

JANOME
WHAT'S NEXT

by Donna Morton
www.snipandstitch.com

Follow the instructions for stitching the appliqué block in the chart below:

Color 1: Dark green thread - stems and berries



Color 2: Orange thread - berries and placement line for applique shapes.

- After stitching, remove the hoop and using a fabric safe glue stick, adhere applique pieces to background fabric.
- Return the hoop to the machine.



Color 3: Continue with orange thread to stitch the satin stitch on the edges of the applique shapes.

Color 4: Use purple thread as a decorative stitch. Embroider on top of the satin stitch.



www.janome.com

JANOME
WHAT'S NEXT

by Donna Morton
www.snipandstitch.com

Color 5: Dark green thread - Placement line for leaves

- After stitching, remove the hoop from the machine. Using a fabric safe glue stick, adhere applique pieces to the background fabric.
- Return the hoop to the machine.



Color 6: Continue with the dark green thread to stitch the satin stitch on the edges of the applique shapes.

Color 7: Light green thread - A decorative stitch is embroidered on top of the satin stitch.



www.janome.com

JANOME
WHAT'S NEXT

by Donna Morton
www.snipandstitch.com

Color 8: Orange thread - Placement line for center flower applique shapes.

- After stitching, remove hoop and using a fabric safe glue stick, adhere the applique pieces to the background fabric.
- Return the hoop to the machine.



Color 9: Continue with orange thread to stitch the satin stitch on the edges of the applique shapes.



Color 10: Use purple thread as a decorative stitch. Embroider on top of the satin stitch.

Color 11: Dark green thread - Placement line for center of flower (hard to see).

- After stitching, remove hoop and using a fabric safe glue stick, adhere applique pieces to background fabric.
- Return the hoop to the machine.



www.janome.com

JANOME
WHAT'S NEXT

by Donna Morton
www.snipandstitch.com

Color 12: Continue with dark green thread to stitch the satin stitch on the edge of the applique shape and to stitch the decorative run line stitch over top of the applique fabric.

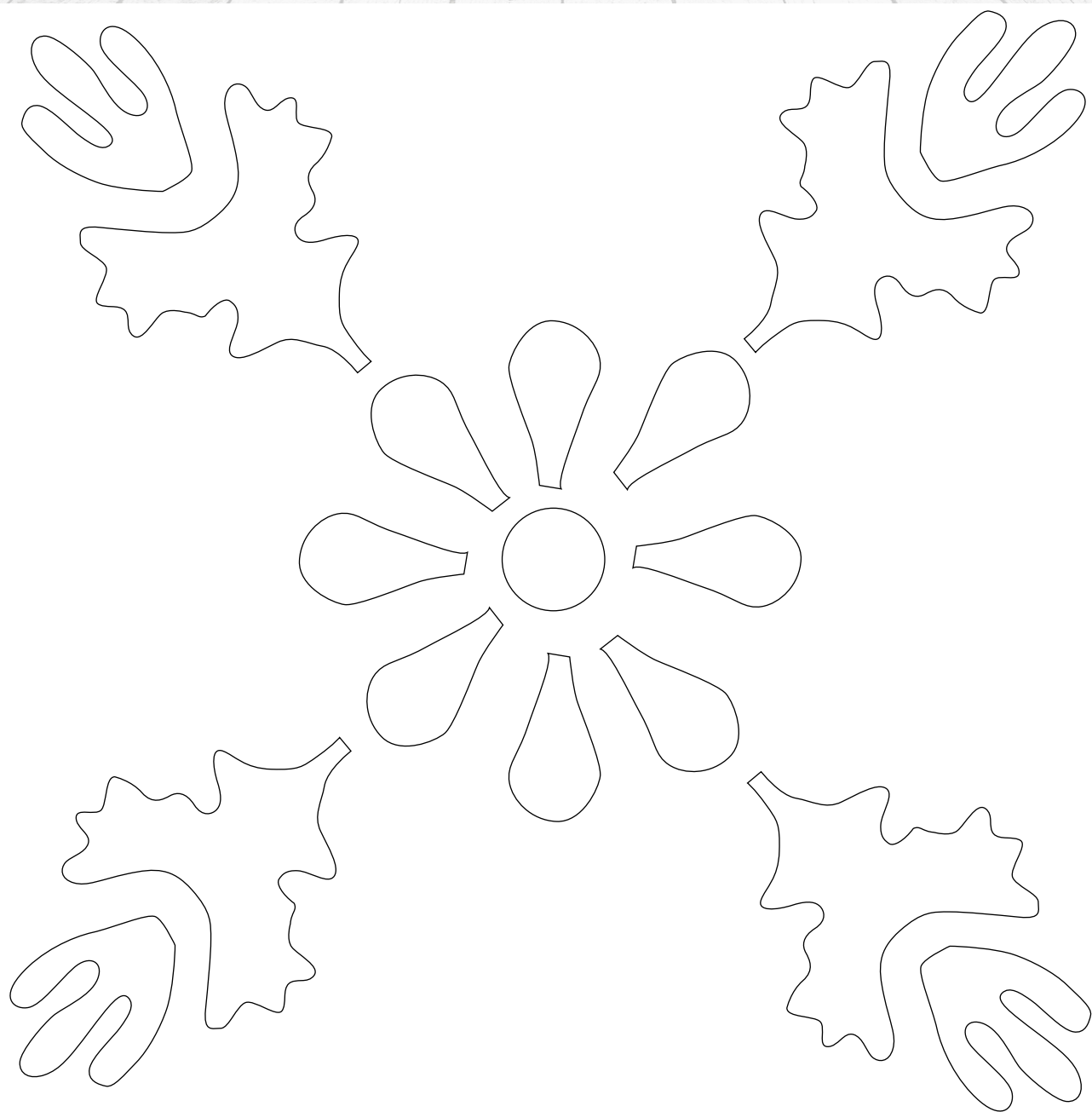
- Remove from hoop.
- Remove basting and excess stabilizer.
- Press from the wrong side.
- Square up to 6 1/2".



www.janome.com

JANOME
WHAT'S NEXT

by Donna Morton
www.snipandstitch.com



www.janome.com

JANOME
WHAT'S NEXT