

Sarah Smith
Rainbow Wavy Inserts Block



JANOME
WHAT'S NEXT

— a story in every stitch —

by Sarah Smith
www.SarahAnnSmith.com

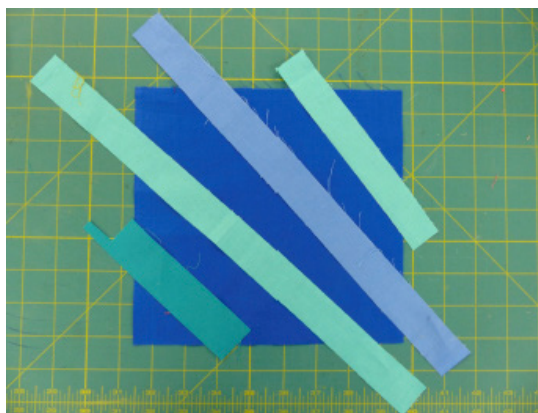


Instructions:

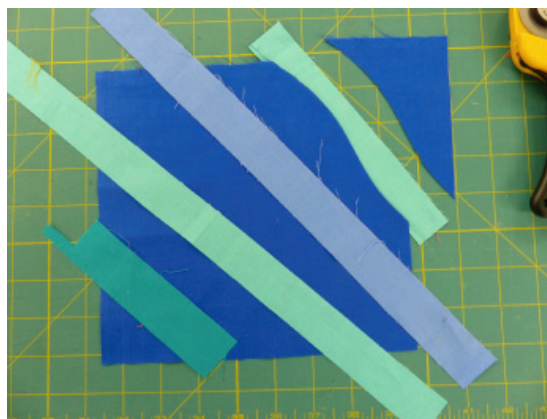
Wavy Inserts Block:

Cut a square of the Plum fabric a lot larger than you think you'll need. For a 6 1/2" unfinished (6" finished) block, start with a square at least 8 inches or more if you want more than four wavy strips.

This block features four inserted waves (Gold, Lava and Lipstick). For each wave, cut a 1" wide strip by the diagonal where you plan to insert it plus at least 2". Accept that there is some waste with this method.



- Cut a diagonal slice with gentle curves in your background fabric.

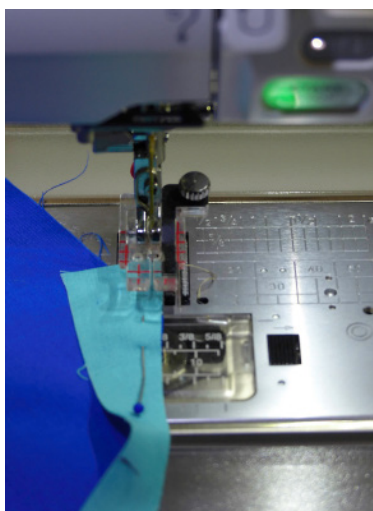


www.janome.com

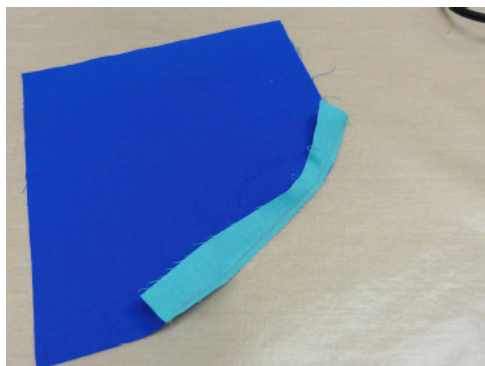
JANOME
WHAT'S NEXT

by Sarah Smith
www.SarahAnnSmith.com

- Place the strip of color just barely underneath the wave so that none of your cutting mat is showing. Cut again along the previous curvy line so that the right side of your fabric and the left side of your strip match.
- Mark the point where your strip and the edge of the background fabric meet (pin, chalk, pen)
- Carefully flip the strip over and pin at the top.
- Sew using the ClearView 1/4" piecing foot, but use the 1/8 line to guide you as you stitch. You will need to stop, lift the presser foot from time to time and align the cut edges. Be careful not to stretch those bias edges.



- Press seam allowances toward the background fabric.

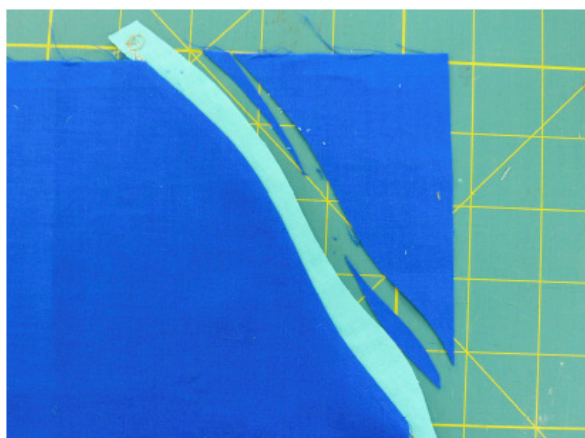


www.janome.com

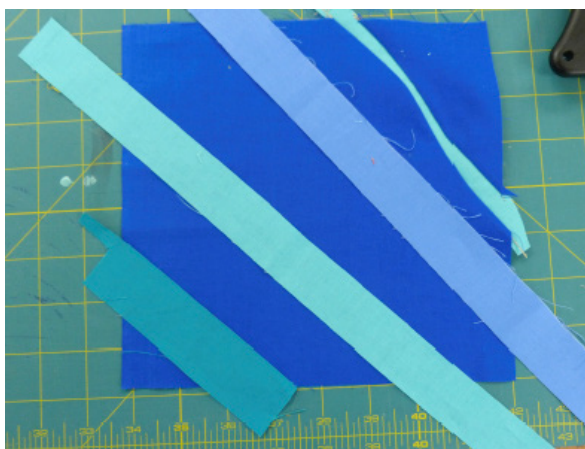
JANOME
WHAT'S NEXT

by Sarah Smith
www.SarahAnnSmith.com

- Repeat the trimming process by cutting an undulating line on your insert. Remember that about 1/8" will be taken up in the next seam allowance, so you need to leave at least 3/16" of the insert color. Tuck the other side of the background just barely underneath the undulating line and cut to match. Repeat the sewing and pressing.



This photo shows the trimmed insert and the part of the blue triangle on the right that has been trimmed to match.



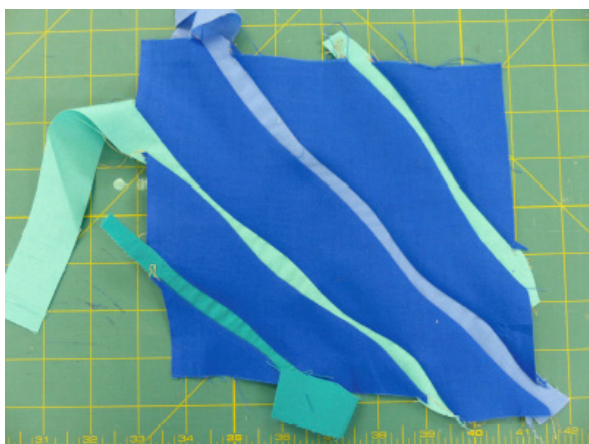
First insert is complete.

www.janome.com

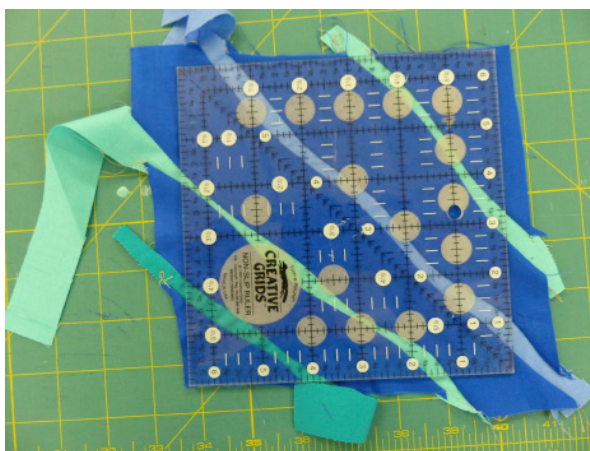
JANOME
WHAT'S NEXT

by Sarah Smith
www.SarahAnnSmith.com

- Continue adding inserts until you are done.



- You may need to steam press and get the tip of the iron into the skinny insert.
- The block shape will distort as you add more strips.
- Square up your block and trim to 6 1/2".

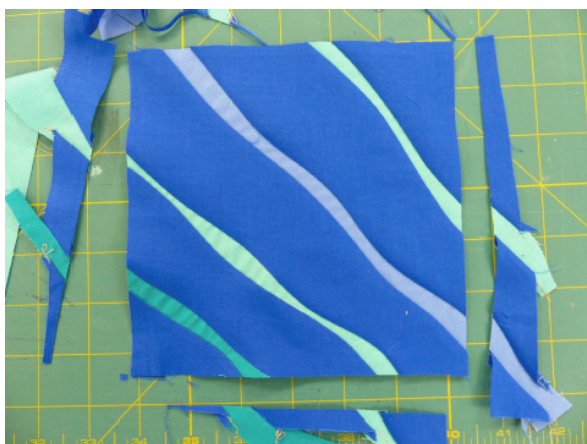


www.janome.com

JANOME
WHAT'S NEXT

by Sarah Smith
www.SarahAnnSmith.com

What began as an 8" block is just barely enough for a block that finishes at 6" (cut at 6 1/2")



www.janome.com

JANOME
WHAT'S NEXT