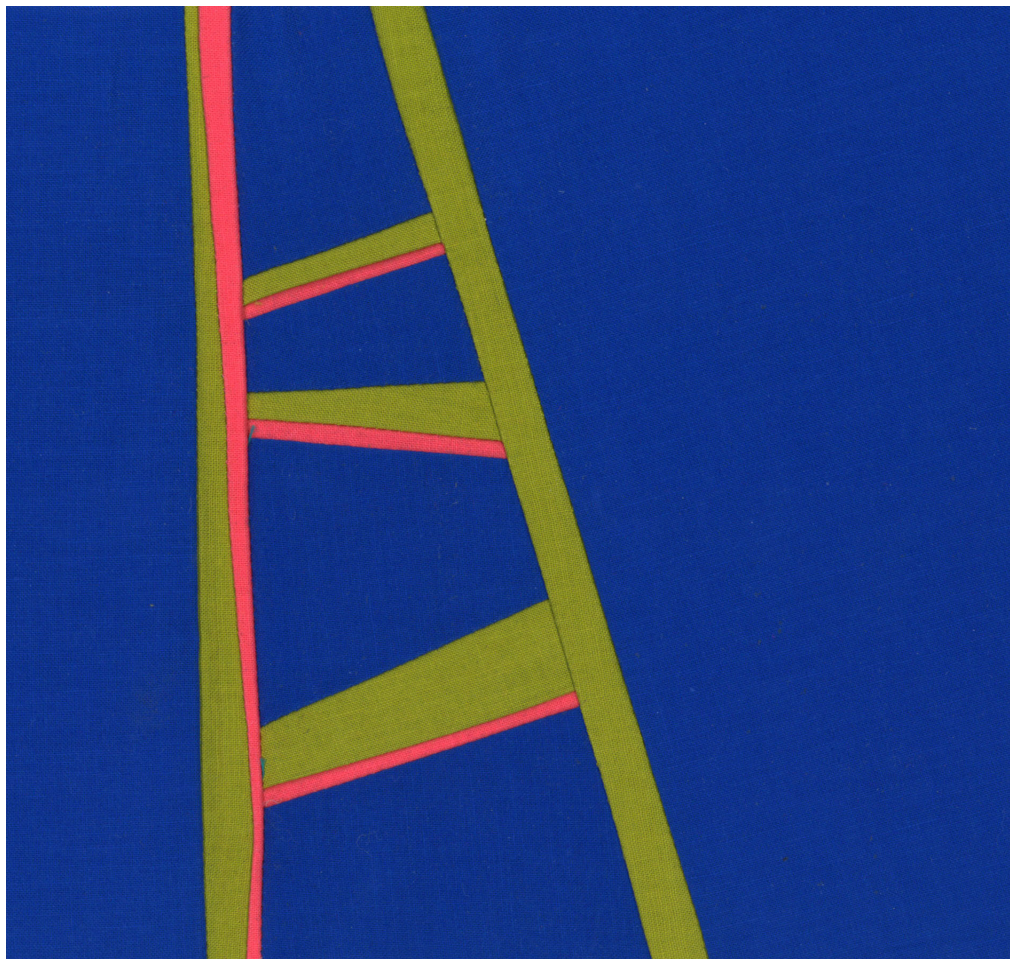


Debbie Bates

Free-Form Pieced Ladder Block

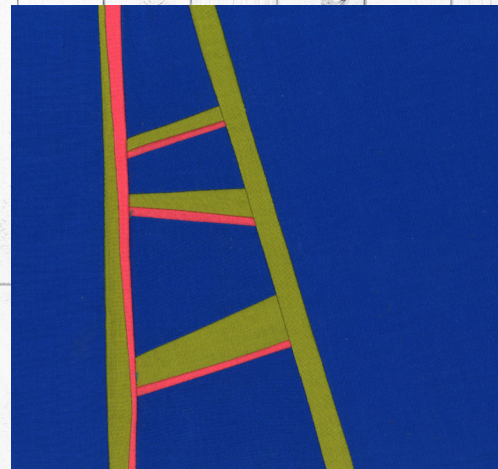


JANOME

WHAT'S NEXT

— a story in every stitch —

by Debbie Bates



Cutting Instructions:

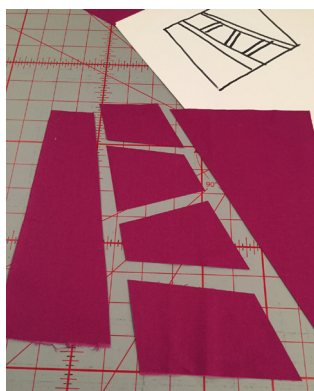
- From Cobalt: One 8 1/2" x 9 1/2" strip as the background fabric
- From Avocado: One 12" x 5" strip as the ladder fabric
- Optional: Cut one 10 1/2" x 3" strip of the Lipstick fabric as the highlight
- Neutral thread for piecing

General Instructions:

- Sketch your idea for your ladder block. This is an important step to gain a sense of the initial angles that you will need to cut.



- Cut the oversized background fabric block: Prepare the background fabric by cutting out a square 8 1/2" to 9 1/2". Cut the angles of the ladder shape into the background. Keep in mind that a significant portion of fabric may be trimmed from any side to create the 6 1/2" finished block.



www.janome.com

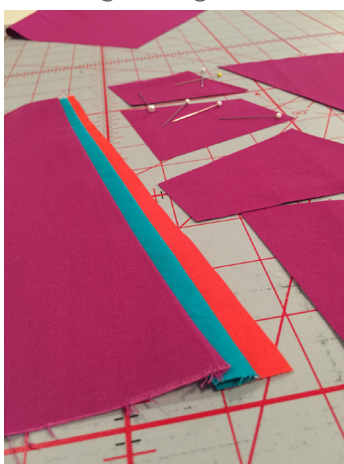
JANOME
WHAT'S NEXT

by Debbie Bates

- Left side ladder leg: Lay the ladder leg fabric along the inside edge of the left side of the background, right sides together. Pin and stitch approximately a $\frac{1}{4}$ " inside the raw edge. Press the seam towards the background and trim to approximately $\frac{3}{4}$ ".



- Highlight on the left side of the ladder leg: Repeating the process above, add the highlight fabric to the ladder leg. Press the seam towards the ladder leg fabric. Trim the highlight fabric to approximately $\frac{1}{2}$ ". Cut at a slight angle to allow a tapered highlight edge.

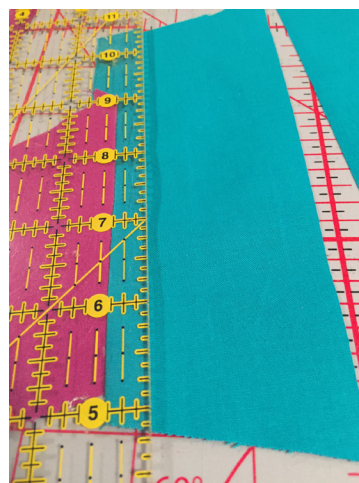


www.janome.com

JANOME
WHAT'S NEXT

by Debbie Bates

- Ladder rungs: The same process as used with the ladder leg is repeated for each ladder rung. The rungs are completed to form a single center unit that will eventually be joined to the left ladder leg. First, add the ladder rung fabric below as the uppermost background section. Then add the highlight fabric to the rung. Add the next background piece and repeat. The rung sections are not trimmed until later. The completed unit will look quite wonky.

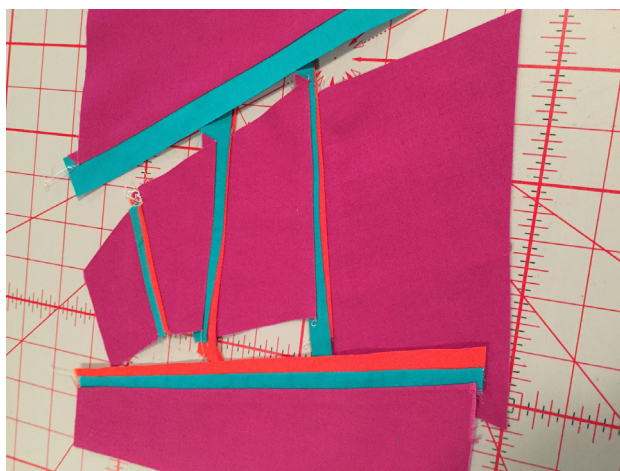


www.janome.com

JANOME
WHAT'S NEXT

by Debbie Bates

- Right side ladder leg: Only the ladder leg fabric is added to the right side (no highlight). At this point, you will have three units to complete the block. (left leg, center rungs and right leg)



- Trim each side of the center section: The center section will need straight edges before it can be joined to the leg sections. Use the straight edge of each ladder leg to guide the trimming of each side of the center unit.

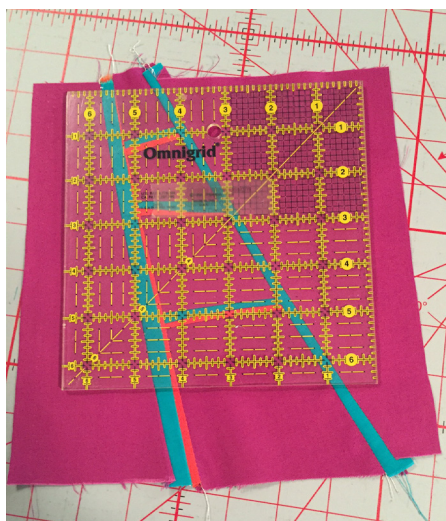


www.janome.com

JANOME
WHAT'S NEXT

by Debbie Bates

- Trim to a 6 1/2" square.



- Note: If, after sewing any seam, it appears too wide, stitch a second seam line inside the first. The excess seam can be trimmed away.



www.janome.com

JANOME
WHAT'S NEXT