

Love Confetti

48"x60"

Michelle Hart

Inspiration:

I wanted to create a bright and bold pattern using simple design. The colorful design on my planner cover provided a starting point. I dove into my Kona cotton stash and randomly placed colors to create a vibrant kaladescope effect. This design would also be a great way to use your scraps and is charm square friendly.



Materials:

- Low volume white fabrics – ½ yard total
- Kona solids – FQ of each or charm squares
- Fabric for binding – ½ yard
- Backing – 3 ¼ yards
- Batting – 52" x 64" piece
- Coordinating thread for piecing
- Thread for quilting

Accessories:

1. Basic sewing supplies
2. Rotary cutter
3. Cutting mat
4. Quilting ruler
5. Washable glue with a fine tip or pins

6. Iron
7. ¼" foot
8. Accufeed Ditch Quilting foot (optional)

Cutting:

Color	5" x 5" squares
Azalea	5
Bluegrass	4
Bright Pink	4
Bubble Gum	4
Candy Green	5
Candy Pink	4
Carnation	6
Carrot	5
Cerise	4
Chartreuse	4
Citrus	5
Crocus	4
Cypress	2

Color	5" x 5" squares
Delft	4
Fern	5
Flame	4
Jade	2
Kumquat	4
Lake	5
Lemon	5
Leprechaun	4
Low Volume	20
Lupine	5
Mango	4
Mulberry	5
Oasis	4

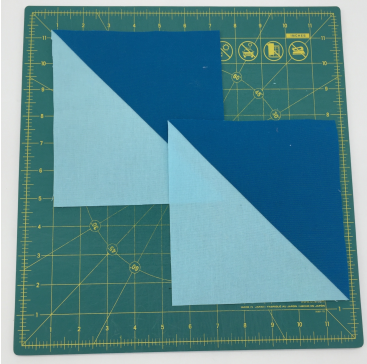
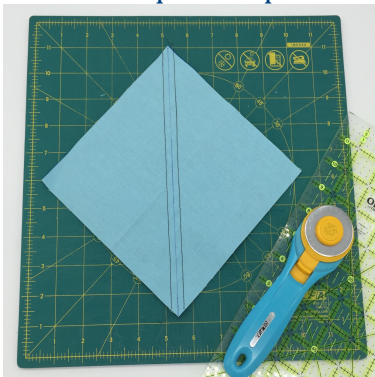
Color	5" x 5" squares
Peach	5
Pear	4
Poppy	4
Purple	4
Royal	5
School Bus	4
Sprout	4
Thistle	3
Tomato	5
Valentine	5
Water	4

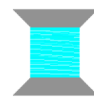
Making the blocks:

Half Square Triangle (HST)

Note: This method makes two matching HST. The cutting requirements list the number of sets that should be made.

1. Draw a diagonal line across the back of one of the 5" squares.
2. Place on top of another 5" square matching colors according to the diagram.
3. Stitch using a scant ¼" seam with the ¼" seam foot along either side of the diagonal line and cut apart on the marked line.
4. Press squares open and trim to 4 ½" x 4 ½".



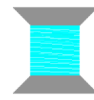


Piecing the quilt:

1. Lay out the blocks as shown in the diagram. Pin or glue and sew blocks into rows. Press seams as outlined in the diagram.
2. Sew the rows together, nesting seams to form the quilt top.
3. Baste the top, batting and backing together to form a quilt sandwich.
4. Quilt as desired. I used The Accufeed Ditch Quilting foot set at a stitch width of 0.0 and a stitch length of 2.8 to quilt lines along each side of the seamline.

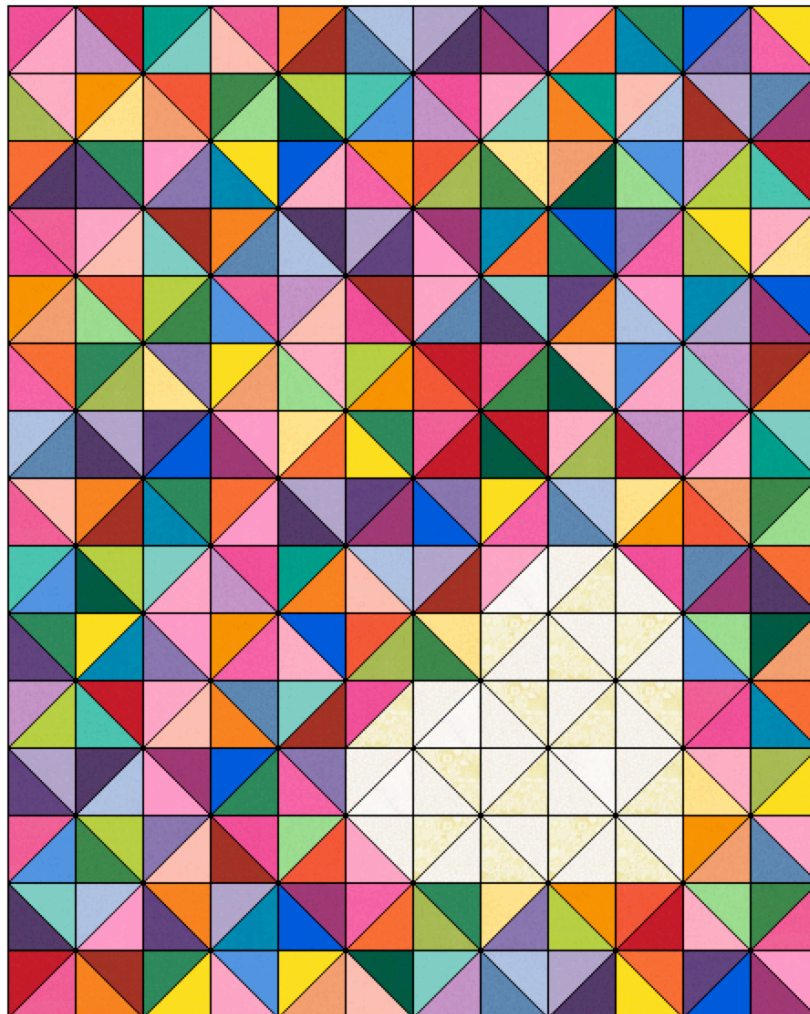
Block	Color 1	Color 2	Sets (1 set yields 2 HST)
1	Carnation	Valentine	1
2	Lupine	Tomato	1
3	Candy Green	Jade	1
4	Azalea	Peach	1
5	Kumquat	Poppy	2
6	Delft	Lake	2
7	Purple	Thistle	2
8	Cerise	Mulberry	1
9	Candy Pink	Carrot	1
10	Fern	Oasis	1
11	Crocus	Royal	1
12	Bright Pink	Citrus	1
13	Bubble Gum	Sprout	1
14	Lemon	School Bus	1
15	Flame	Mango	1
16	Leprechaun	Pear	1
17	Bluegrass	Chartreuse	1
18	Cypress	Water	1
19	Lupine	Valentine	1
20	Candy Green	Carnation	1
21	Azalea	Tomato	1
22	Jade	Kumquat	1
23	Lake	Peach	1
24	Poppy	Thistle	1
25	Cerise	Delft	1
26	Carrot	Purple	1
27	Fern	Mulberry	1

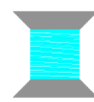
Block	Color 1	Color 2	Sets (1 set yields 2 HST)
41	Delft	Kumquat	1
42	Lake	Purple	1
43	Mulberry	Lake	1
44	Candy Pink	Cerise	2
45	Carrot	Oasis	1
46	Fern	Royal	1
47	Bright Pink	Crocus	1
48	Citrus	Sprout	1
49	Bubble Gum	Lemon	1
50	Mango	School Bus	1
51	Flame	Pear	1
52	Chartreuse	Leprechaun	1
53	Bluegrass	Tomato	1
54	Azalea	Water	1
55	Lupine	Peach	1
56	Poppy	Valentine	1
57	Carnation	Delft	1
58	Candy Green	Purple	1
59	Kumquat	Mulberry	1
60	Candy Pink	Lake	1
61	Oasis	Thistle	1
62	Cerise	Royal	1
63	Bright Pink	Carrot	1
64	Fern	Sprout	1
65	Crocus	Lemon	1
66	Citrus	Mango	1
67	Bubble Gum	Pear	1



28	Candy Pink	Crocus	1
29	Citrus	Oasis	1
30	Bubble Gum	Royal	1
31	Bright Pink	School Bus	1
32	Flame	Sprout	1
33	Lemon	Leprechaun	1
34	Bluegrass	Mango	1
35	Pear	Water	1
36	Chartreuse	Lupine	1
37	Cypress	Tomato	1
38	Azalea	Valentine	1
39	Carnation	Peach	1
40	Candy Green	Poppy	1

68	Chartreuse	School Bus	1
69	Flame	Tomato	1
70	Azalea	Leprechaun	1
71	Bluegrass	Peach	1
72	Carnation	Water	1
73	Candy Green	Lupine	1
74	Mulberry	Royal	1
75	Carrot	Lemon	1
76	Citrus	Fern	1
77	Carnation	Low Volume	1
78	Valentine	Low Volume	1
79	Low Volume	Low Volume	9





Piecing diagram:

1	2	3	4	5	6	7	8	9	10	11	12	➔
13	14	15	16	17	18	19	20	22	23	24	25	➔
26	27	28	29	30	31	32	33	34	35	36	37	➔
38	39	40	41	42	43	44	45	46	47	48	49	➔
50	51	52	54	55	56	57	58	59	60	61	62	➔
63	64	65	66	67	68	69	70	71	72	73	5	➔
6	7	74	44	75	76	21	53	13	2	1	3	➔
4	5	10	9	7	8	11	12	6	14	15	16	➔
18	17	20	19	22	23	24	77	79	78	25	26	➔
27	29	28	31	30	32	33	79	79	79	35	34	➔
36	37	39	41	40	78	79	79	79	79	38	45	➔
43	42	44	46	47	79	79	79	79	79	49	48	➔
54	52	55	56	51	77	79	79	79	79	50	57	➔
58	60	59	61	62	63	64	65	68	69	67	70	➔
21	5	76	72	66	71	73	6	7	75	74	44	➔