

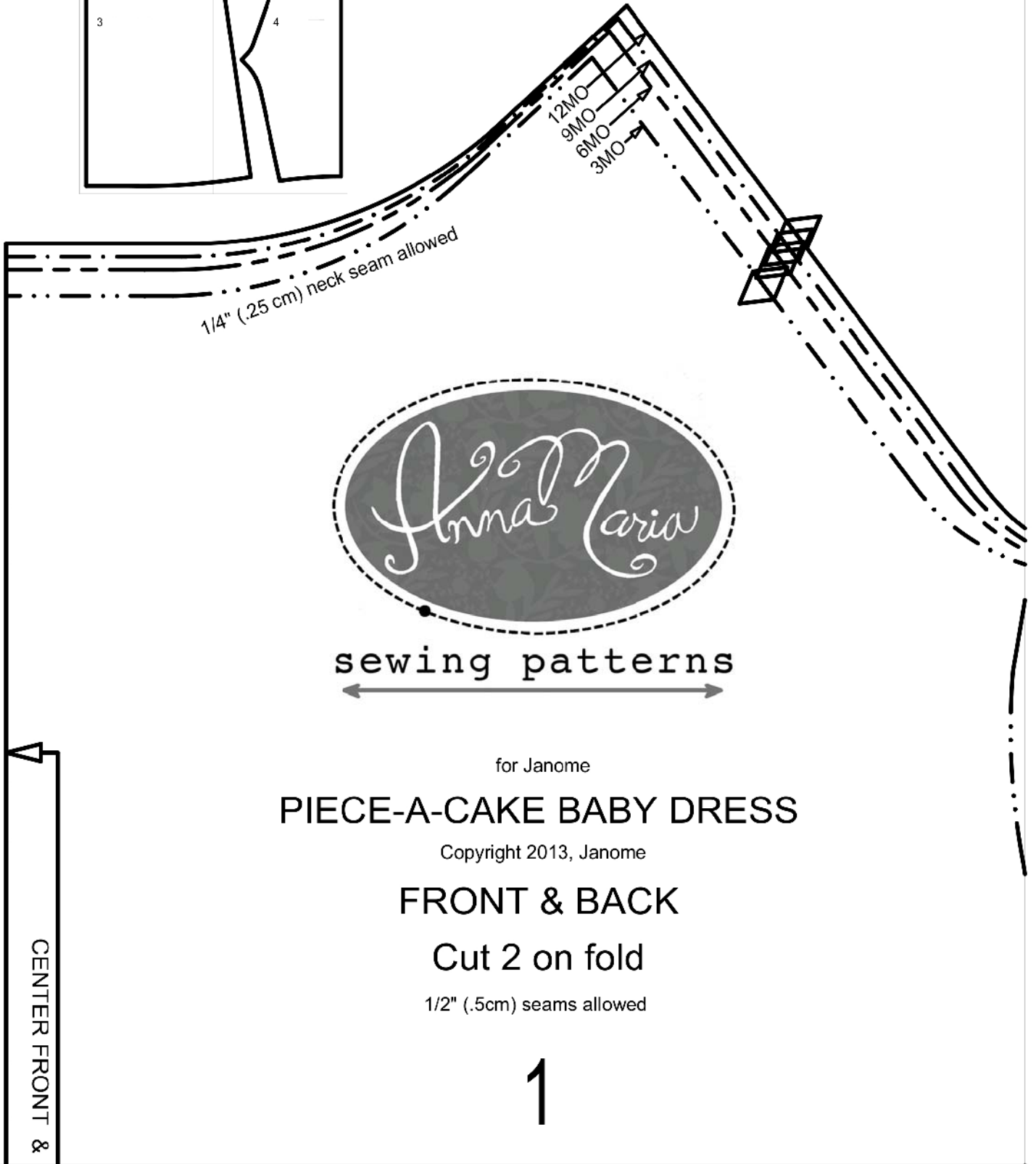
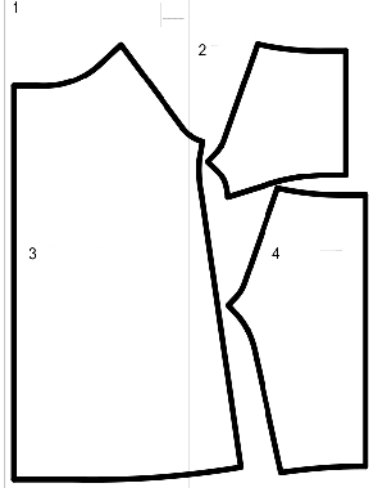
1

Anna Maria - ePiece-a-Cake Baby Dress

Anna Maria - ePiece-a-Cake Baby Dress GUIDE

Assemble to 15-1.2 x 20-1/2" (39.4 x 52.1cm)

1x1"
2.5 x 2.5 cm



sewing patterns

for Janome

PIECE-A-CAKE BABY DRESS

Copyright 2013, Janome

FRONT & BACK

Cut 2 on fold

1/2" (.5cm) seams allowed

1

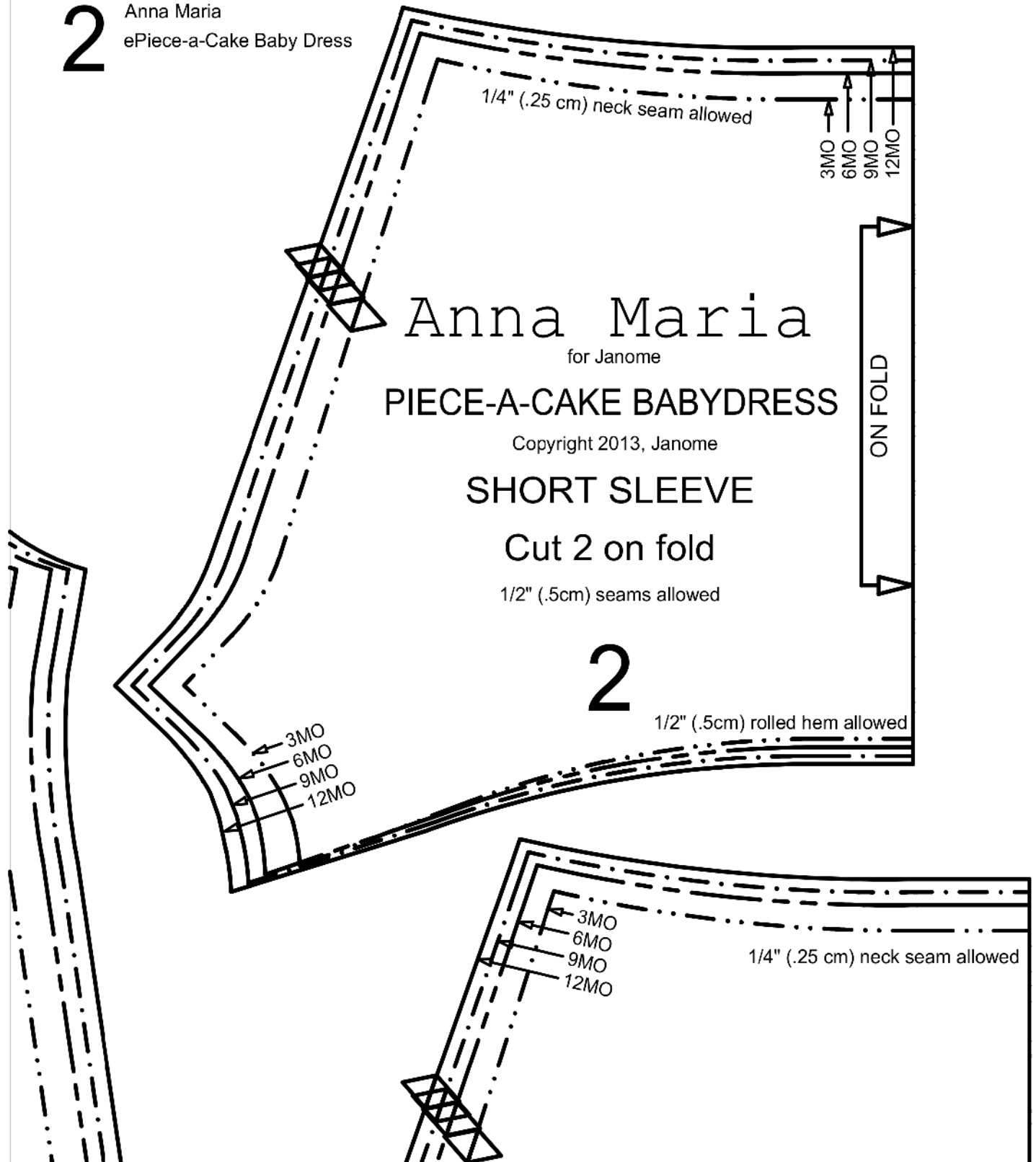
CENTER FRONT &

A FEW TIPS FROM ANNA MARIA!

- * I always recommend washing, drying and pressing your materials before beginning your sewing project.
- * It never hurts to have some inexpensive muslin in your sewing stash to try out a new pattern before using an expensive or cherished material.
- * ALWAYS read the pattern instructions all the way through and look over the pattern pieces before beginning your cutting and sewing.

Visit annamariahorne.com for more inspiration and information on books, fabrics, other sewing patterns, free patterns and more!

2 Anna Maria
ePiece-a-Cake Baby Dress



CENTER BACK ON FOLD

3

Anna Maria - ePiece-a-Cake Baby Dress

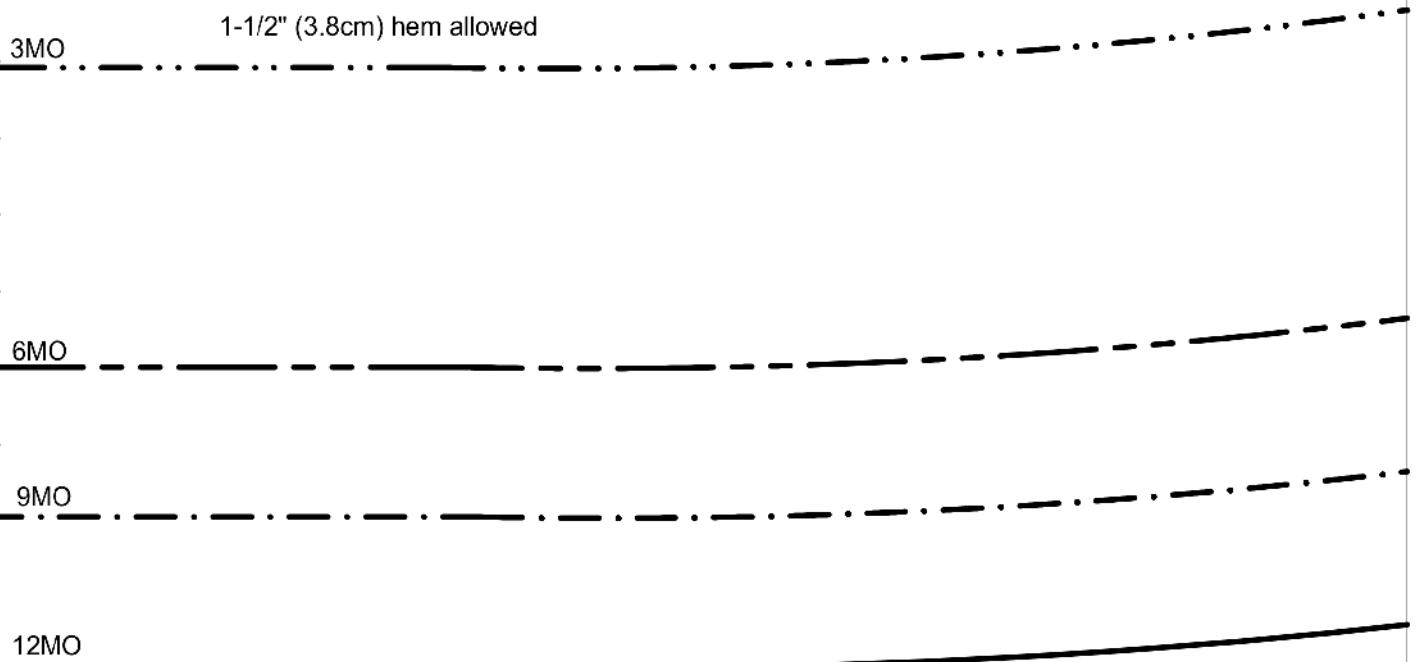
FINISHED GARMENT MEASUREMENTS

	3MO	6MO	9MO	12MO
INCHES				
BUST:	22 in.	24in.	25in.	26in.
WAIST:	22in.	24in.	25in.	26in.
HIP:	24in	26in.	27in.	28in.
METRIC				
BUST:	55.88cm.	60.96cm.	63.50cm.	66.04cm.
WAIST:	55.88cm.	60.96cm.	63.50cm.	66.04cm.
HIP:	60.96cm.	66.04cm.	68.56cm.	71.12cm.

All designs are copyright Anna Maria Horner 2013

This pattern is intended only for non-commercial, personal purposes and may not be used in the production of goods for sale in any form.

For more information send an e-mail to: customerservice@annamariahorne.com



4

Anna Maria - ePiece-a-Cake Baby Dress



sewing patterns

for Janome

PIECE-A-CAKE BABY DRESS

Copyright 2013, Janome

LONG SLEEVE

Cut 2 on fold

1/2" (.5cm) seams allowed

3

ON FOLD

