



### Hi + Happy Spring....

I often wonder what *might* be possible in machine embroidery and then find out that with my Janome 15000 it *is indeed possible*. This **Leaning Rose Embroidery & Clutch** is no exception and I am so happy to see one of my favorite designs realized into a charming cross stitch style embroidery that takes center stage, *albeit off to one side*. The construction is so straight forward but the design is interesting and modern enough to play out many combinations of fabric (with or without an embroidered vignette). The fold-over of the tilted, zippered edge helps to reveal the flower but keeps a simple functionality that will make this clutch a date night favorite. Plan a few for upcoming fancy Spring & Summer events! Enjoy! xo, **Anna Maria**

\*Watch the highlights video and sew along with me at <http://janome.com/en/inspire/anna-maria-horner/>

## MATERIALS

### FABRIC

(\*The ½ yard fabric requirement below for the outer fabric is plenty for the actual clutch, however if you are creating a machine embroidery first, you may want to have a slightly larger piece (2/3 yard) to make the hooping process easier before you begin embroidery.)

- 1/2 yard fabric for outer clutch
- 1/2 yard contrast fabric for lining

### NOTIONS & TOOLS

- 1 yard of medium interfacing, fusible on one side
- 14" fashion zipper
- straight pins
- (marking tool, optional)
- 6 colors machine embroidery thread (2 for leaf/stem, 4 for floral elements)
- iron & ironing board
- zipper foot (E foot on the Janome)

## PREPARING FOR EMBROIDERY

1. As mentioned above in the materials section, it is best to have a little more than a ½ yard if you are going to machine embroider so that you have a healthy border around the perimeter of the design for hooping the fabric. Mark out a rectangle on the **right side** of of Outer Clutch fabric (14" x 17") with plenty of border using straight pins or a temporary marking tool.
2. Press to fuse and interface the **wrong side** of the entire, marked rectangle, with a piece of interfacing that extends a little beyond the 14x17" markings on the **right side**.
3. Hoop (see Step 2 below) the interfaced fabric so that the center of the hoop area is positioned where you would like for the embroidery to be stitched out. (I stitched out the rose in the lower right corner of the tall rectangle.) Be sure the fabric is smoothly hooped in place but not overly tight, or too loose.

## EMBROIDERY

1. After downloading the **Leaning Rose Embroidery**, move it to a jump drive that can be inserted into your sewing machine. (Or connect wirelessly to your computer or I-pad on the Janome 15000!)
2. Once you locate the design select it and take note of the hoop & foot indicated for embroidery.
3. Adjust colors as desired, and begin stitching out design, changing thread colors as necessary.

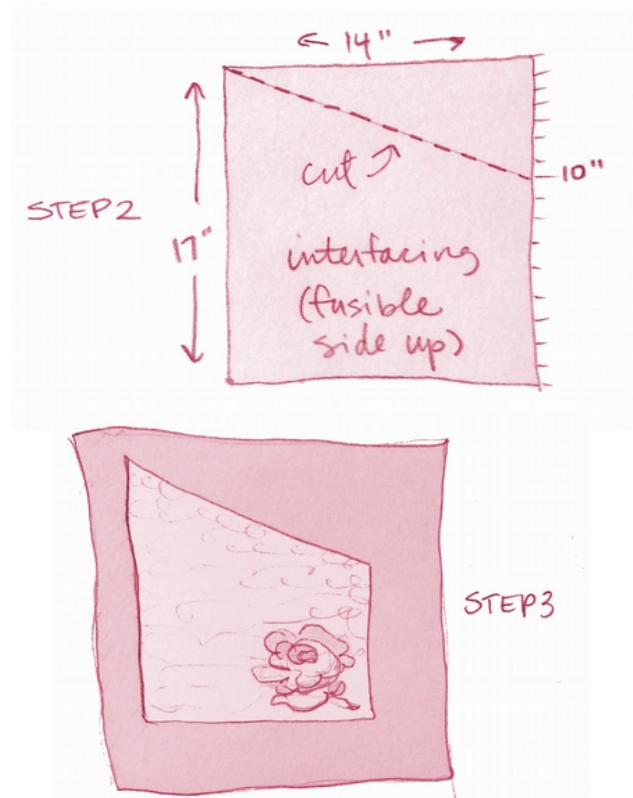
## CUTTING

1. Create the "pattern" for your clutch from the interfacing. Start by cutting a rectangle that measures 14" x 17".

2. Orient the rectangle so that the 17" sides are at your right and left. (Also be sure that the fusible side of the interfacing is facing up.) The next cut will be on an angle from the upper left point down towards the right side at 10" from the bottom right corner. Hold a straight edge in this position to make the cut, and set aside the small triangular scrap.

3. You can now use this interfacing as a pattern to cut the embroidered Outer Front (make sure it's pressed well after being in the hoop), and making sure the rose is where you want it positioned by seeing through the sheer interfacing.

4. Now lay the Outer Front **right side** down against the right side of same fabric for the Outer Back to cut that piece as well.



5. Fold lining fabric with **right sides** together then use the interfacing pattern piece to cut both Lining pieces.

6. Now that you are done using the interfacing piece for a pattern, you can press with an iron against the **wrong side** of the Outer Back to fuse it in place.

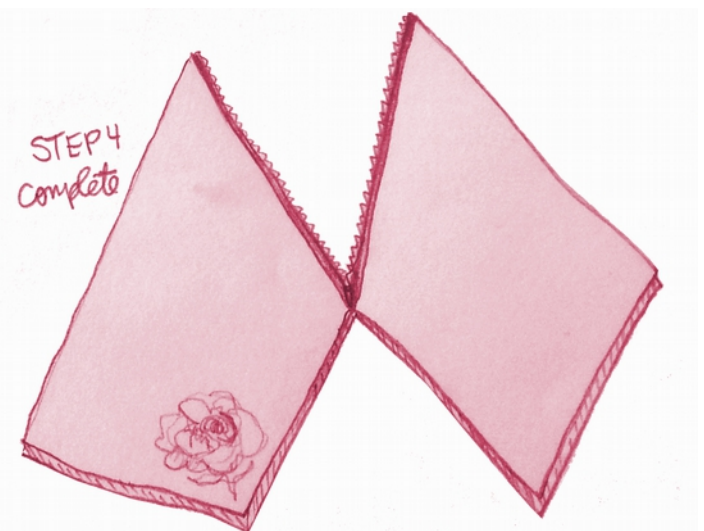
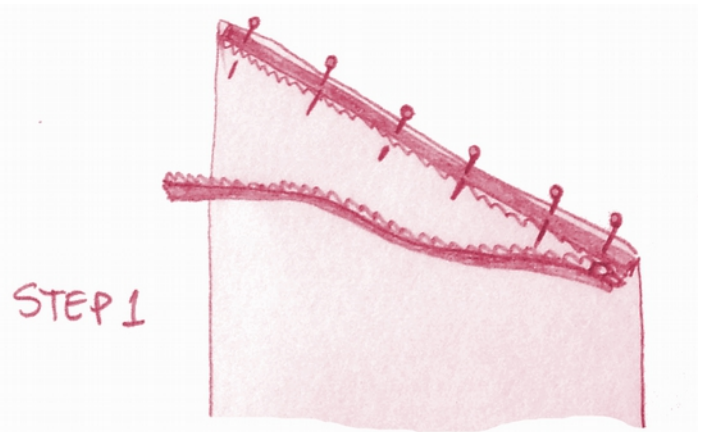
## INSTALLING ZIPPER

1. Open zipper and place it **right side** down against the **right side** of the angled edge of Outer Front, making sure the open zipper tab is down at the lower end of the angle. Pin edges together.

2. Now layer a Lining piece **right side** down against the pinned zipper + Outer Front (you'll know it's the right lining piece if the shapes match with their **right sides** together), and redo the pinning to include all three pieces. This will leave you with the zipper sandwiched in between the Outer Front and Lining piece.

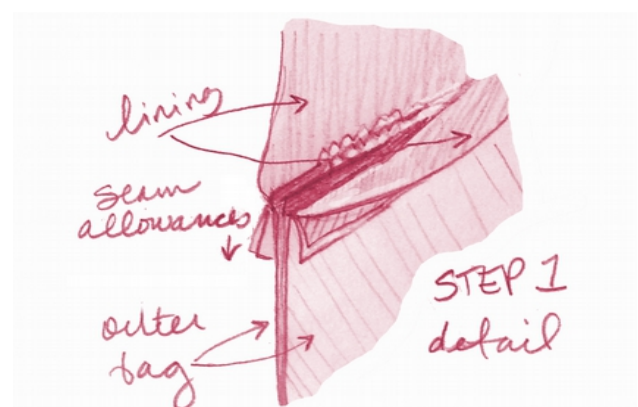
3. Using your zipper foot to sew along the angled edge through all layers, starting at the top point. (With my Janome, this meant using my E foot and moving the needle position over to the left to make a nice snug stitch line alongside the zipper, and also keeping fabric edge aligned with edge of foot.) When you get a few inches way from the zipper head, stop with your needle down, raise the presser foot, and zip the head up past where you've stitched, behind the presser foot, then continue sewing to end.

4. You can now open the zipper up all the way and repeat the Outer Back, Lining & Zipper "sandwich" (Steps 1 & 2) on the other side of the zipper and sew as you did in Step 3. Press all pieces away from the zipper edge to ready the bag for the construction steps.



## CONSTRUCTION

1. Zip the zipper all but a few inches closed. Fold the Outer Front & Back **right sides** against each other, and keep lining pieces up away and against each other. Also lay all seam allowances against the **wrong sides** of the Outer pieces, and make sure that the zipper teeth edges are flat against each other and in line.



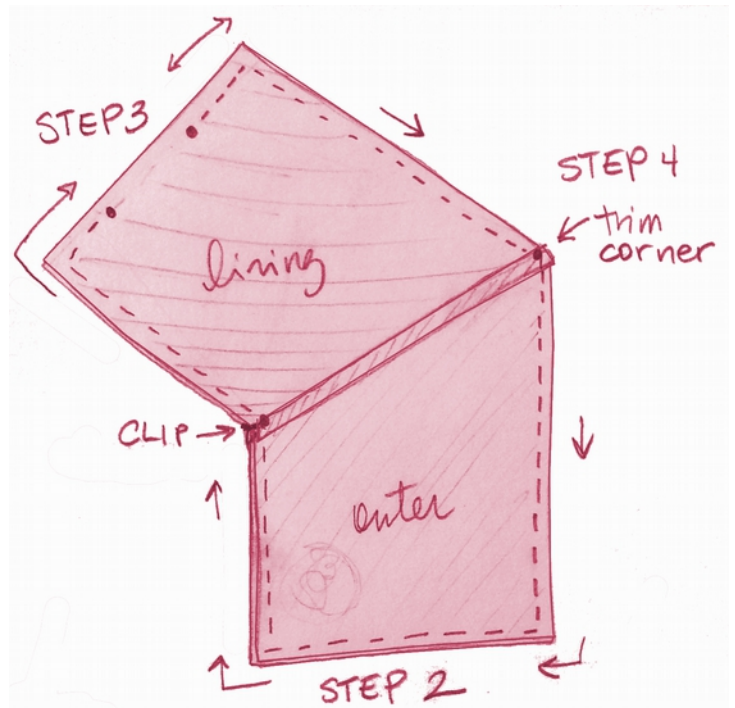
2. Starting at the zipper seam, create a U-shaped seam down one side of the Outer Clutch, across the bottom, and back up to finish at the zipper seam on the other side. Carefully cut corners of seam allowance.

3. Repeat Step 2 with the Lining pieces, however on the bottom edge, stop the sewing then restart again a few inches later to leave an opening in the lining.

4. Trim off excess at corner seam allowance and clip seam allowance as indicated at right.

5. Reach into opening in Lining and pull Outer Clutch through, then reach through reach into the open zipper to turn clutch to the **right side**. Work with the layers to smooth all into place.

6. Pull bottom edge of lining out to close the opening with a scant top stitched seam. Return lining to inside, smooth out with your fingers and press well with the iron.



## FINISHING TOUCH

1. To create a tassel for the zipper pull, use any of our favorite scrap yarn and wind around a piece of card stock or ruler that is roughly 8" wide, until it is about 1/2 as thick as you would like for the tassel to be once completed.

2. Take a single strand of yarn and trim to about 12" long, and fold it in half.

3. Slide the wound yarn off the card/ruler and lay it on top of the single folded strand at a perpendicular angle. Wrap the strand around the center bulk of the wound yarn, and pull the two ends through the loop of the fold to tighten.

4. Fold wound yardage in half at the center, and tug on the passed through strand a bit to tighten.

5. Wrap another piece of single yarn around the top of the tassel to form a "head", tie a knot, then trim all lengths of the tassel to be even and neat.

6. You can then tie the threaded strand into a knot, trim and pass through zipper tab.

Enjoy!

\*\*And please share your results #amhlovesjanome

