



Piece A Cake BABY DRESS

by Anna Maria Horner for

JANOME

Piece A Cake BABY DRESS BY ANNA MARIA HORNER

The Piece A Cake Baby Dress is such a simple sew that I highly recommend doing a batch of them for the special baby girl in your life! Because of the simplicity, the dress is a blank canvas to play with a mix of prints, add little bits and bobs, indulge in some of Janome's machine embroidery, or add some heirloom details by hand. This was the first dress I made for my Mary Anna before she was even born, and I promptly followed it with duplicates in buttery soft voile for her newborn days. The simple sewing is also ideal for a fast growing baby, because you can actually keep up with newer versions from newborn to 12months.

FINISHED GARMENT DIMENSIONS

INCHES	3 months	6 months	9 months	12 months
bust	22 inches	24 inches	25 inches	26 inches
waist	22 inches	24 inches	25 inches	26 inches
hip	24 inches	26 inches	27 inches	28 inches
METRIC	3 months	6 months	9 months	12 months
bust	55.88 cm	60.96 cm	63.50 cm	66.04 cm
waist	55.88 cm	60.96 cm	63.50 cm	66.04 cm
hip	60.96 cm	66.04 cm	68.56 cm	71.12 cm

MATERIALS

Fabric requirements are by style of dress and same for all sizes, allow extra for matching or centering prints

DRESS STYLE	Long Sleeve w contrast	Long Sleeve all the same fabric	Short Sleeve with contrast	Short Sleeve all the same fabric
Dress Front & Back	2/3 yard	1 yard	2/3 yard	7/8 yard
Sleeves	1/3 yard		1/4 yard	
1" wide bias	40" long	40" long	22" long	22" long

1/4" elastic -cut length suggestions by size are only suggestions... every baby and elastic is different.

SIZE	3 months	6 months	9 month	12 month
neckline	13.5 inches	14 inches	14.5 inches	15 inches
cuff (long sleeve)	4.5 inches each	4.75 inches each	5 inches each	5.25 inches

Other Notions & Tools

- * Pattern pdf printed, tiled & taped together, trimmed to size
- * Straight pins
- * Safety Pin or other elastic feeding tool
- * Spool of coordinating thread
- * Cutting tools for cloth, paper & threads
- * G presser foot (or the blind hem foot for your machine)
- * Iron & ironing board

CUTTING

1. Cut two **Front & Back** (piece 1) on fold, center on print design if desired
2. Cut two **Short Sleeve** (piece 2) on fold -OR- two **Long Sleeve** pieces on fold (piece 3)
3. Cut 1" wide bias for neckline, and also for cuffs if making long sleeved. Refer to chart on previous page for length of bias needed, which is dependent on dress style (actual lengths used of bias may be less depending on dress size).

ASSEMBLY

1. Finish any edges of the **Sleeves** or dress **Front & Back** as desired with a zigzag or serged edge.
2. Matching single notches, lay raglan edge of one **Sleeve** against raglan edge of dress **Front** with **right** sides together and pin in place. Do the same with remaining **Sleeve** at the other side of the dress **Front**.
3. Now pin together the free raglan edges of both **Sleeves** to the raglan edges of the dress **Back** matching single notches and with **right** sides together. You should have all four dress pieces pinned together as illustrated at right.
4. Sew each raglan seam one at a time using a 1/2" seam allowance and carefully following the subtle curve of the edge. (Optional: With each seam, carefully clip a few cuts into the seam allowance near curve.) Press seam allowances open.
5. With **right** sides together, align the raglan sleeve seams from **Front** to **Back** and the double notches of the dress **Front** and dress **Back**. Pin together from the **Sleeve** edge to the bottom hem edge. Repeat on other side of dress.
6. Sew from Sleeve edge to bottom hem using a 1/2" seam allowance and taking a pivoted turn at the raglan seam. Repeat at the other side of dress.
7. Carefully clip the seam allowance at the underarm pointing towards the turn in the seam. Repeat at other underarm and press all seam allowances open.

ELASTIC CASINGS

1. Turn Dress to **right** side. Press back one short end of the bias towards its **wrong** side by about 1/4".
2. With **right** sides together lay the folded end of the bias against one of the raglan seams at the neckline edge, aligning the long edge of bias with the neckline edge and pin just at this beginning point.

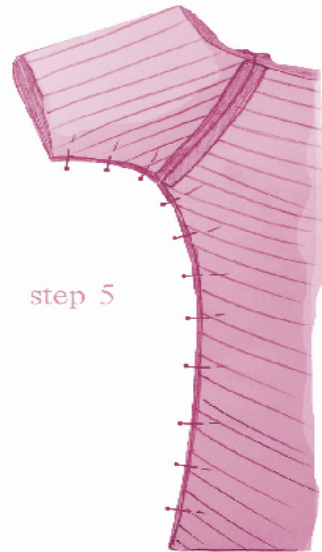
NOTE: Because the bias and the neckline will give and stretch in slightly different ways as you sew them together, I find it easier to not pin the whole seam first, but just let them pass under the machine naturally, and not really stretching one or the other.

3. Using a 1/4" seam allowance, sew the bias to the neckline all the way around until you are just a few inches away from where you began, then stop with needle down. Estimate how

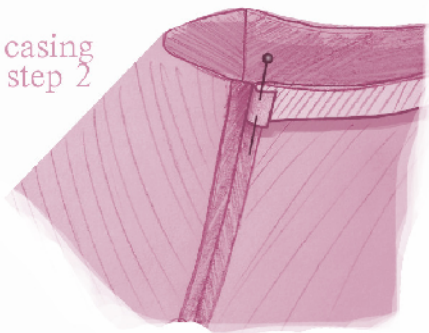
steps 2 & 3



step 5



casing
step 2



much of the bias length you will need to meet the beginning fold of the bias + a 1/4" extra and trim off. Fold the second edge of bias back so that its fold will butt up against the first and hold in place to finish seam.

4. Press **right** side of bias casing up towards the seam allowances all around neckline. Now fold top edge of bias over the seam allowances with **wrong** sides together, then fold both down towards **wrong** side of dress. **None of the bias should be showing from the right side of dress.** Keep these creases in place for the following sewing step with a few pins.

5. Topstitch casing down in place at the very bottom edge of the casing fold all around the neckline. This should give you about a 3/8" casing channel for the elastic.

6. If you are making a long sleeved dress, create the channels for the sleeve cuffs by following Steps 1-5 for the neckline casing, but starting and stopping the bias attachment at the sleeve seam. **-OR-** If you are making short sleeves, finish them with a 1/4" rolled hem or as desired.

HEM & FINISH

NOTE: Making a blind hem requires a blind hem presser foot. For the Janome Horizon 15,000 it is the G foot. The first few steps of making a blind hem are at the ironing board.

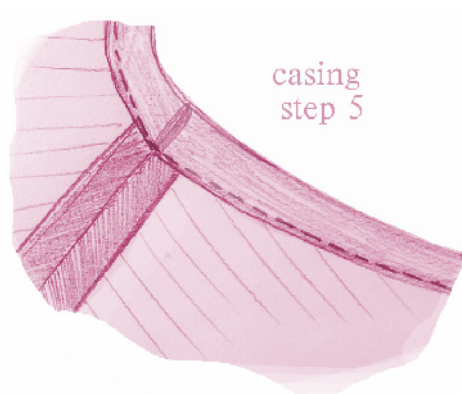
1. With dress **wrong** side out, lay around narrow end of ironing board. Fold up and press a 1/2" of the bottom dress edge towards the **wrong** side all around the hem to make a crease. Take care that your creased edge follows the subtle curve of the bottom edge of the dress.

2. Fold towards the **wrong** side again by 1" encasing the raw edge and creating a new crease all around the dress.

3. Now fold the hem back towards its **right** side to create a new fold, and also reveal a 1/4" of the first fold. If this sounds more complicated than it ought to, have a look at the video (<http://www.janomespecials.com/annamaria/videos.html>) and the illustration at right. Press the new crease all around.

4. Keep all creases in place and also help to ease the curve of the bottom edge by pinning at the side seams first. Now stretch the dress width a bit to accommodate the ease as you pin in place all around.

5. After G foot is attached to machine, slide dress hem edge underneath the foot with the **wrong** side facing up. Make sure the top fold is snugly up against the left edge of the black flange of the G foot. Select the blind hem stitch (which is #18 of the utility stitches on the Janome 15,000). This stitch will sew a straight stitch onto the bottom fold at right, and periodically jump over the black flange to grab a single stitch at the very edge of the top fold at left. You can adjust how deeply it "grabs" that single stitch of the top fold by adjusting the needle position (this is dependent on your your machine's options). Sew hem all around the bottom perimeter of dress. Turn hem back to flat, and press well.



fold profiles for blind hem preparation

step 1 1/2" fold

step 2 1" fold

step 3 fold towards right side to reveal 1/4"



6. Using the elastic lengths suggested by size, feed through the opening in the casing at the neckline, continuing to adjust the gathers as you go and making sure not to let the elastic end slip through. Once you've fed all the way through and made sure you haven't twisted the elastic, pull both ends out and overlap them and pin together. Tack them together with a few machine stitches. Let elastic slip back into the casing by stretching the neckline a bit, then tucking the raw ends in neatly with an awl or straight pin.

7. Repeat the above step on each of the sleeve cuffs if making the long sleeved version. Give the dress and final pressing and ENJOY!

