

# PATCHWORK TRIANGLES

a quilt pattern by Brittany Llyod



THROW

  
LO & BEHOLD  
*stitchery*  


[www.loandbeholdstitchery.com](http://www.loandbeholdstitchery.com)  
[@loandbeholdstitchery](https://www.instagram.com/loandbeholdstitchery)

# BEFORE YOU BEGIN:

Patchwork Triangles is the perfect quick and easy advanced beginner pattern. If this is your first quilt using fabric cut on the bias, I recommend starching your fabric before cutting. Solids and nondirectional prints work best with this pattern. Enjoy!

Read through all instructions before beginning:

- Skill Level: Advanced Beginner
- Check <https://www.loandbeholdstitchery.com/pages/pattern-corrections> for any updated corrections.
- All seams are a ¼".
- A stitch length of 2.0 - 2.5 mm is recommended for piecing. A stitch length of 3.0 - 3.5 mm is recommend for quilting.
- All measurements listed in the pattern are unfinished.
- Diagrams are not to scale.
- This pattern assumes that your width of fabric (WOF) is 42".
- FQ = fat quarter = 18" x 21"; ¼ yard is 9" s WOF; ½ yard is 18" x WOF.

Use #patchworktrianglesquilt and #loandbeholdpatterns and tag us @loandbeholdstitchery so we can see what you create!

## FABRIC REQUIREMENTS

Small Throw 46" x 53"	
Triangles	(13) FQ or (16) ¼ yards or (6) ½ yards
Backing	3 yards
Binding	½ yard

## CUTTING INSTRUCTIONS

Small Throw 46" x 53"	
Triangles	192
Half Triangles	24
Backing	(2) 54" x WOF
Binding	(6) 2 ¼ x WOF

## CUTTING DIAGRAMS

**Using the diagrams below & instructions on pg3:**

1. First cut fabric into 5 ½" strips
2. Use either the template or a square ruler to cut the number of triangles shown from each strip.

**FQ**  
5 ½" x 18" x 21"

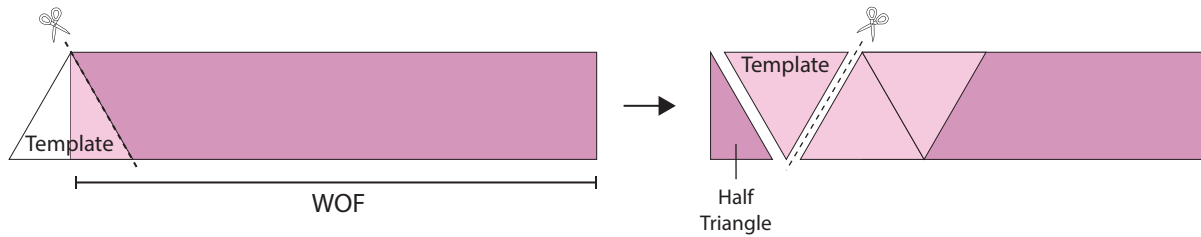
**¼ yard**  
5 ½" x 9" x 42"

**½ yard**  
5 ½" x 18" x 42"

Special Note when cutting ¼ & ½ yards: Be sure to alternate the starting angle when cutting strips to ensure you get both right and left half triangles.

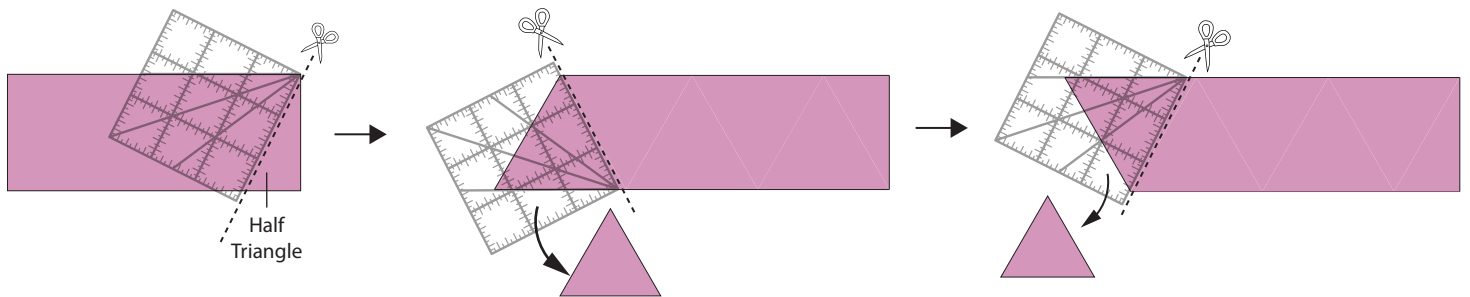
## USING THE TEMPLATE

Trim the selvages from your WOF strips. Using the template provided, cut the end of your 5 1/2" x WOF piece at a 60 degree angle. Rotate the template and begin cutting along piece. Refer to the diagrams below. Save the ends of your WOF strips; these are considered "half triangles."



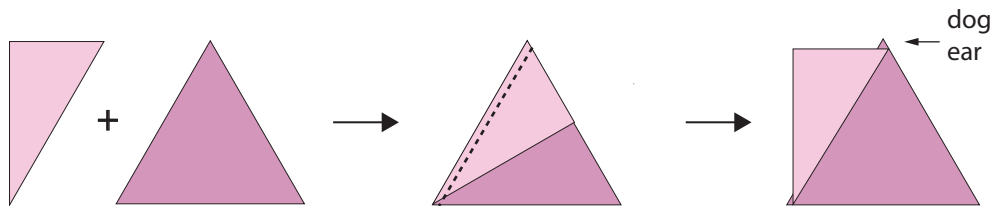
## USING A SQUARE RULER with 30 & 60 degree lines

1. Trim the selvages from your WOF strips. Place the 5 1/2" x WOF strip horizontally on your cutting mat. Align the 30 degree line on your square ruler with the top edges of your WOF strip. Cut along edge of ruler.  
2. Align the 60 degree line with bottom of the strip to create a triangle. Cut along edge of ruler. Set triangle aside.  
3. Align 30 degree mark with top of the strip. Cut along edge of ruler. Repeat along length of strip. Save the ends of your WOF strips; these are your "half triangles."

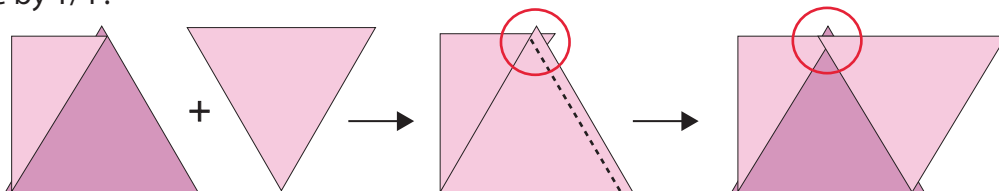


## SEWING INSTRUCTIONS

1. Arrange triangles to your desired layout.  
2. Starting with the first row, place the first half triangle right sides together with the second triangle. Sew 1/4" seam along one side. Gently press seam open. Do not trim dog ears. You will use these to line up your rows.

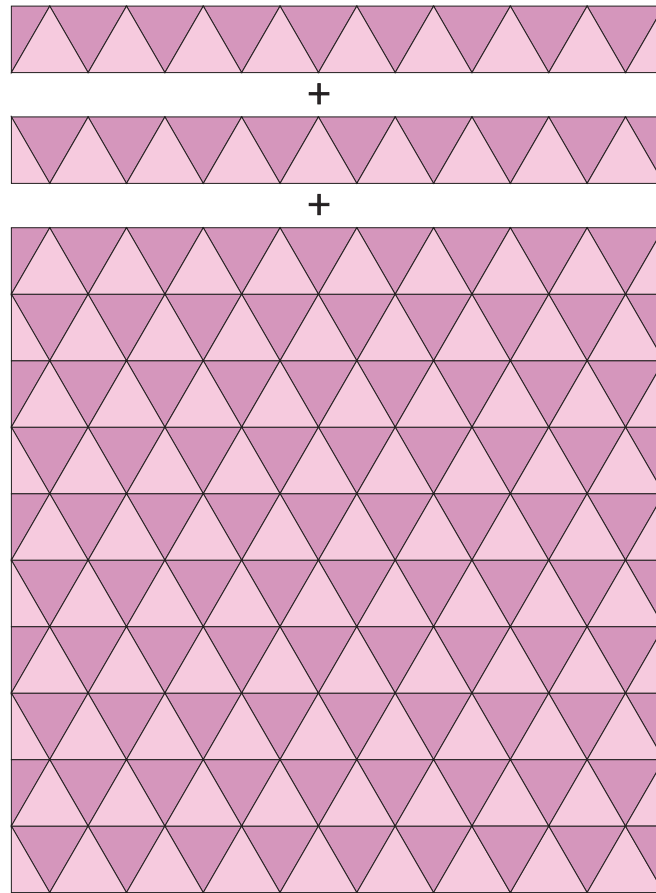


3. Place the third triangle right sides together with the previous triangle. Align the bottom and right edge. Sew 1/4" seam along the right side. Gently press the seam open. The third triangle should overlap the second triangle by 1/4".



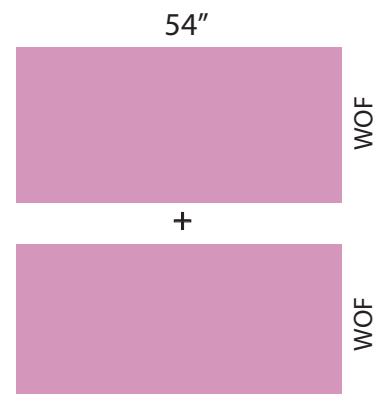
4. Continue to add triangles to the row until you create a row of 16 triangles with a half triangle on each end. Press seams open.

5. Repeat steps 1-3 to create a total of twelve rows. Be sure to alternate the starting angle for each row as shown below. Combine rows by placing two rows right sides together, aligning the dog ears. Sew 1/4" along length of row. Trim the dog ears and press seams open.

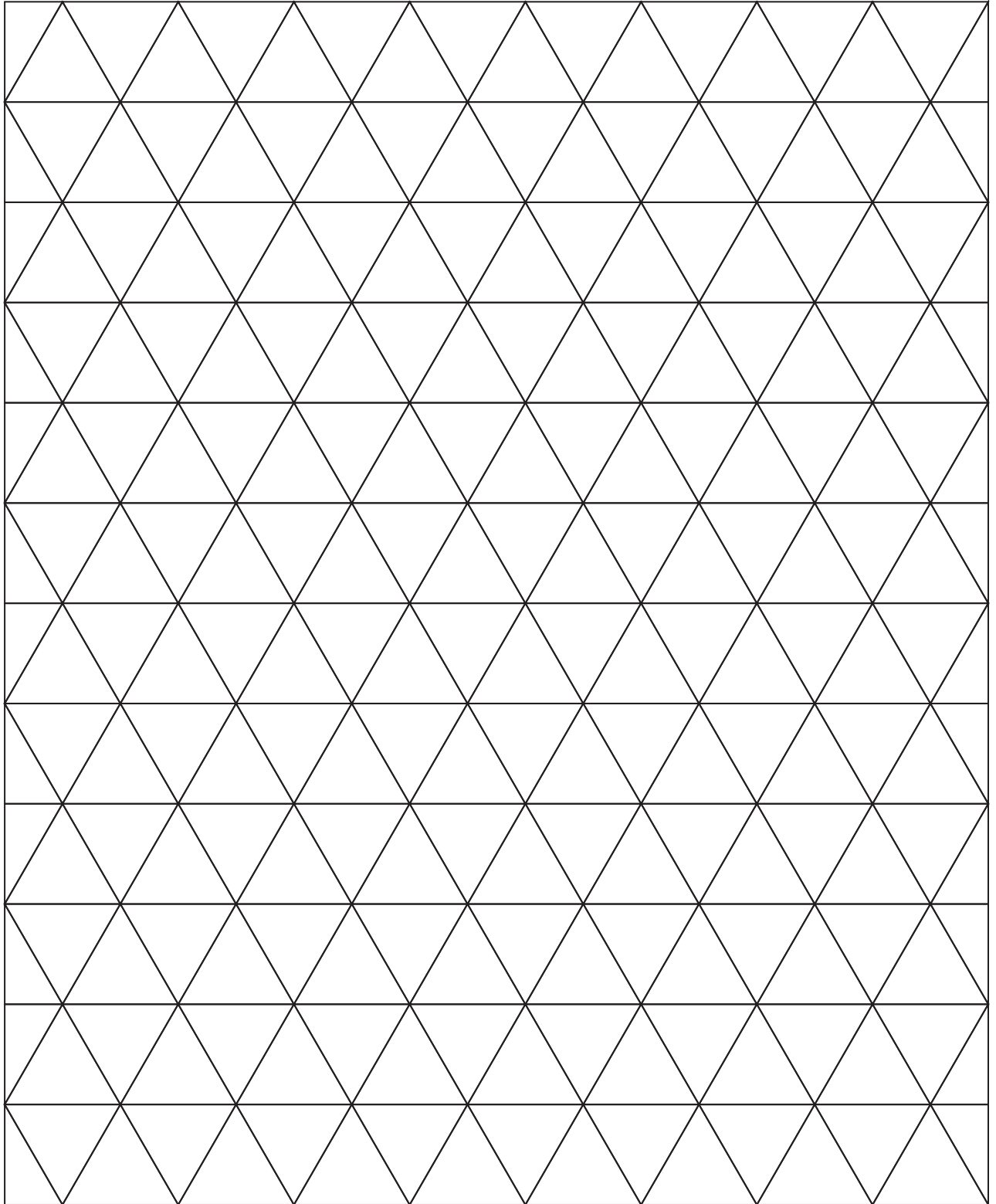


### QUILT ASSEMBLY

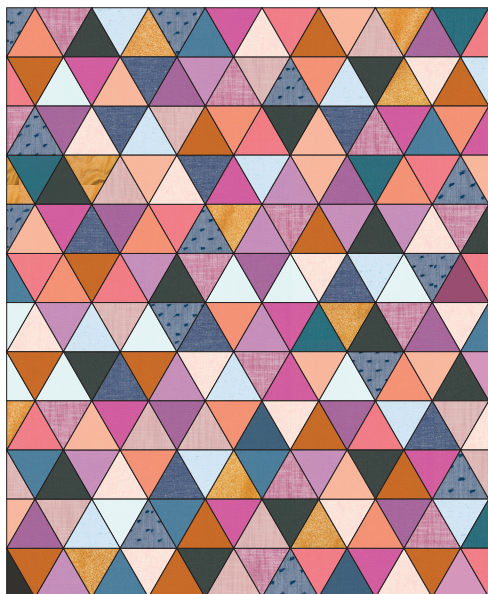
1. Piece backing fabric together using a horizontal seam as seen in the diagram to the right. Press the seam to one side
2. Baste, bind and quilt as desired. Find free tutorials below:  
Pin Basting - <https://bit.ly/3DGIGbK>  
Machine Quilting - <https://bit.ly/3r314Xp>  
Machine Binding - <https://bit.ly/3vaS3KO>
3. Share your finished quilt on social media using the hashtags [#patchworktrianglesquilt](https://twitter.com/patchworktrianglesquilt) and [#loandbeholdpatterns!](https://twitter.com/loandbeholdpatterns)



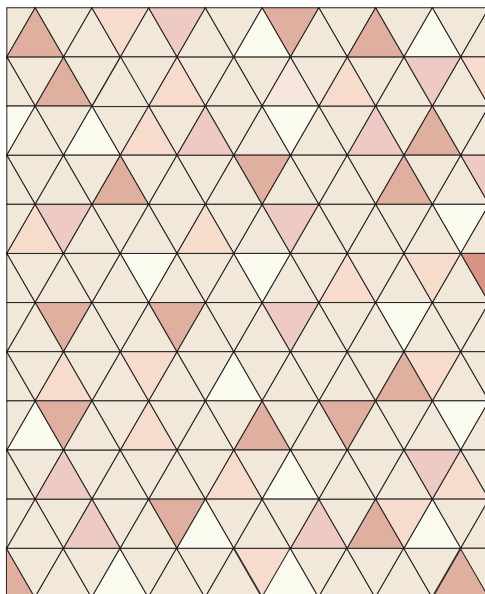
# COLOR YOUR QUILT



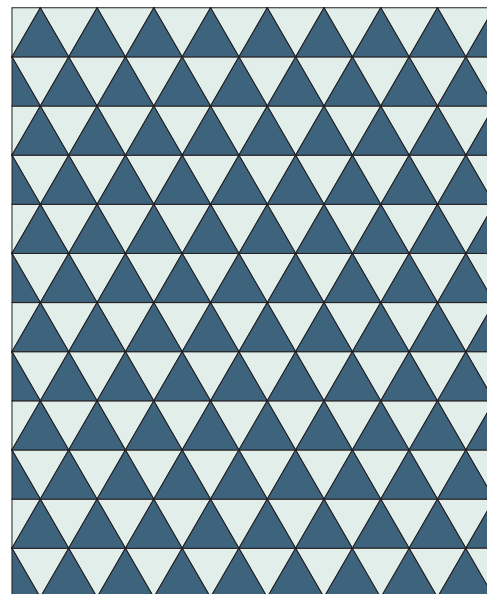
# DESIGN IDEAS



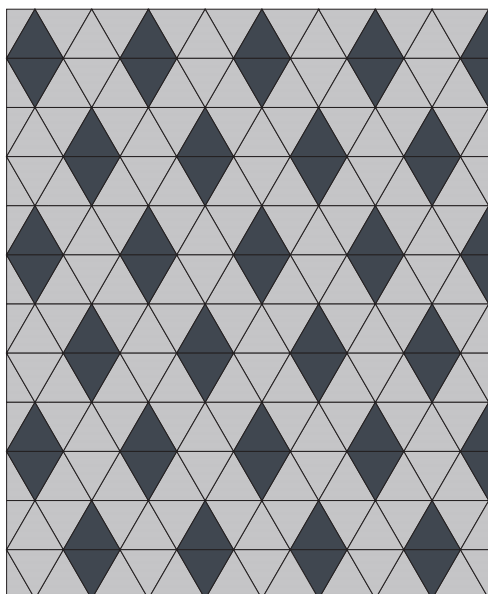
**Foreground:** Palette Picks FQ  
bundle by Lo & Behold Stitchery  
for Robert Kaufman



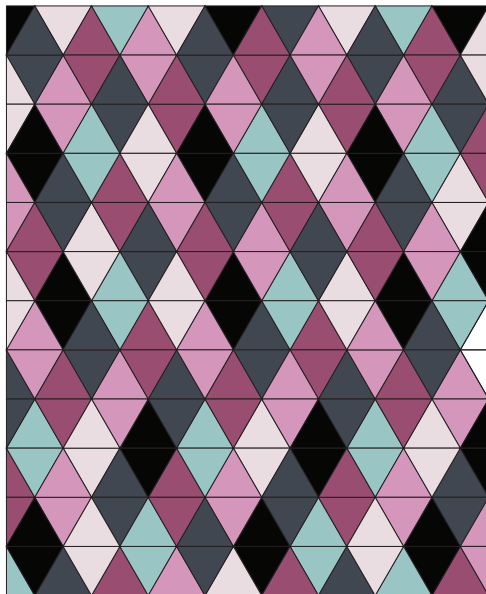
**Background:** AGF Coconut Milk  
**Foreground:** AGF Blushing,  
Sweet Macademia, White Linen,  
& Cotton Candy



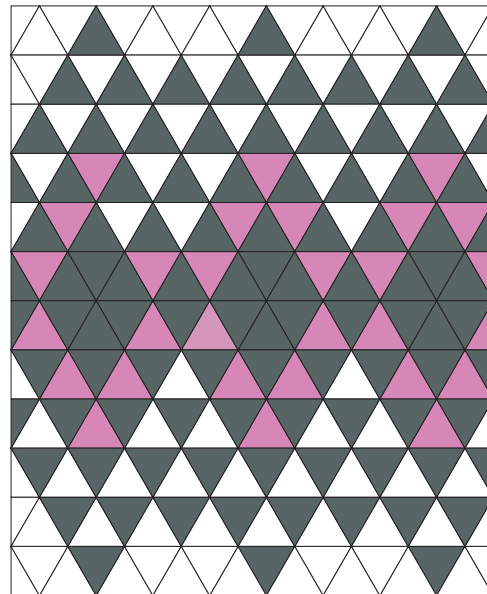
**Background:** Kona Dove  
**Foreground:** Kona Cadet



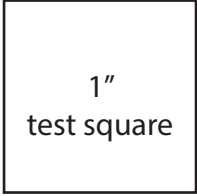
**Background:** AGF Vaporous  
**Foreground:** AGF Slate



**Foreground:** AGF Slate, Lavendar  
Water, Morning Frost, Bougainvil-  
lea, Caviar, & Cosmos



**Background:** AGF Snow  
**Foreground:** AGF Northern  
Waters & Rock Candy



*For more information about working with templates, visit [www.loandbeholdstitchery.com/blogs/lo-and-behold/working-with-templates](http://www.loandbeholdstitchery.com/blogs/lo-and-behold/working-with-templates)*

*This template is 100% to scale. Printer settings should be set to "Actual Size", NOT "Scale to "Fit". This template includes the seam allowance, do not add 1/4".*

