

Continental Pincushion

Created by Miriam Coffey, Janome Education Specialist

If you are like me and you can never find a pincushion when you need one, why not attach one to your machine? With this project you will always have a pin within reach. This pincushion is quick and easy and makes a great gift for all your sewing friends.

Time:

1 Hour

Skill Level:

Confident beginner

Fabric and Notions Required:

- Basic Sewing Supplies: Sharp fabric scissors, pins, marking pen, small ruler, cutting mat
- Spray adhesive
- Fabric Scrap at least 6"-7"
- Batting Scrap at least 6"-7"
- 1 inch or smaller elastic 24"
- Polyester or cotton fiber fill or Walnut Shells for stuffing pincushion
- One set of snaps
- Hand sewing needle
- Lighter or matches

Cutting Instructions:

Cut fabric and batting into a 6"x7" rectangle

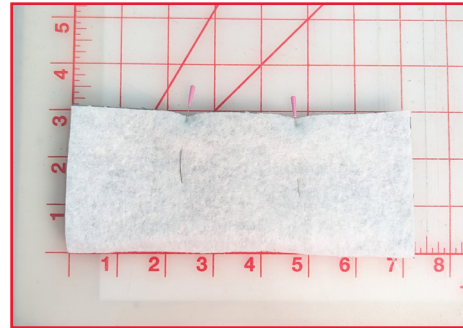
Cut Elastic in half, making two 12" long pieces

Use a lighter to burn the raw ends of elastic to keep from fraying

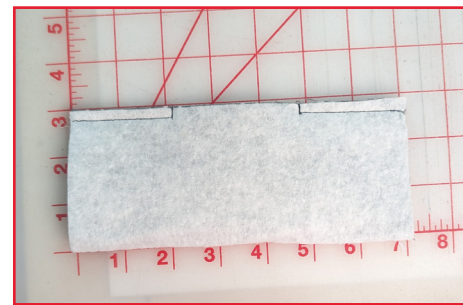


Sewing Instructions:

1. Attach Zig-Zag Foot A, set machine to a 1/4" seam.
2. Spray baste batting to the back of the fabric.
3. Fold Fabric in half, on the 6" side creating a 3"-7" rectangle.



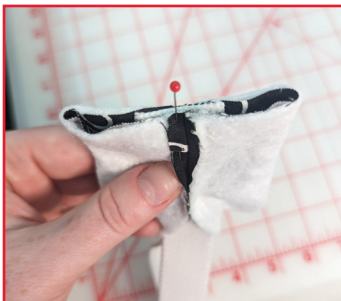
4. Pin in place along the 7" side.



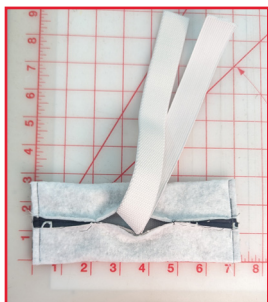
5. Sew along the 7" side, leaving a 2.5" opening in the center for turning project right side out.
6. On the folded 6" sides find the center and make a mark, creating your center point.
7. Match center point to seam.
8. Insert elastic through the 2.5" opening.
9. Match center of elastic to center point mark pin in place.

Continental Pincushion

10. The elastic will be sandwiched between center point and seam.



11. Repeat steps 6-10 on remaining side.
12. Sew seams.

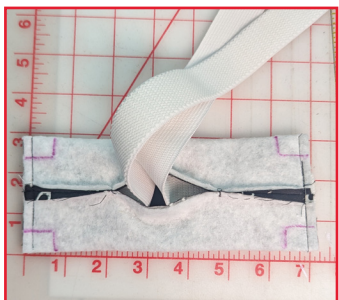


Boxing Corners:

1. Using a ruler make a 1/2" box on a corner, line up the 1/2" mark on the ruler to the fold and the sewn line.



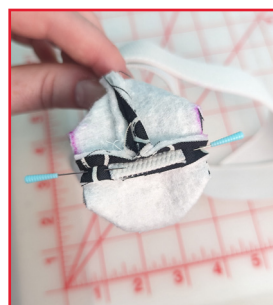
2. Repeat for remaining sides.



3. Trim all four corners using scissors.



4. On each corner pinch and find the center point lining up the center point to the seam, pin in place.



5. Repeat for remaining corners.
6. Sew all four corners reversing at the start and end of the seam.

Finishing touches :

1. Turn right side out.
2. Stuff opening with polyester or cotton fiber fill or walnut shells.
3. Hand sew opening closed.
4. Follow manufacturer's instructions to attach the snaps to the ends of the elastic.

Alternative attachment:

If you do not want to use snaps use two 20" pieces of 1/4" elastic and tie at the back of the machine.

