

Vintage-Inspired Beach Bag

By Trish McLaughlin of Trish Stitched



Make a super chic vintage inspired round beach tote!

Skill Level: Intermediate

Sewing Time: 3 hours sewing time

Janome Supplies Required:

- Any Janome sewing machine
- Red Tip needle
- Bobbins
- Buttonhole Foot

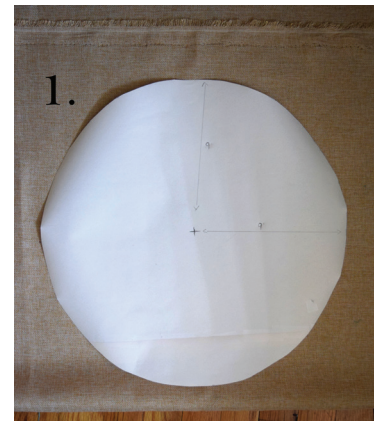
Supplies + Fabric Required:

- 1 yard burlap
- Large piece of paper or cardboard for pattern piece
- Thick fusible Interfacing (Pellon 808 or similar)
- Ruler
- Marking Tool
- One Button

Sewing Instructions:

Note: All seams sewn at 1/4" unless noted differently.

1. To make sure your bag comes out even, create a pattern piece out of paper or cardboard. Create a circle that has a 9" radius. This will be your bag exterior.



2. Cut your burlap:

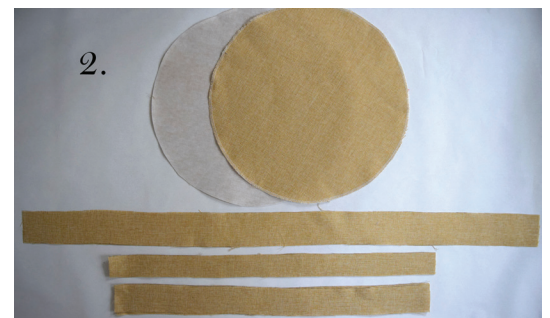
Circles: (x2)

Center Band: 47" x 3.5"

Top Binding: 2" x 25" (x2)

Straps: 27" x 2.5" (x2)

Button Loop: 9.5" x 2"



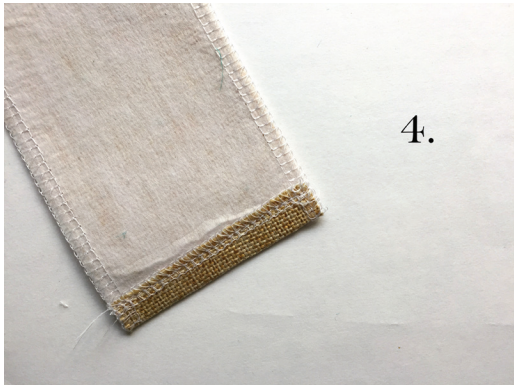
To make it easier to sew your burlap, serge or zig zag all edges of fabric. Iron on thick interfacing to all pieces but top binding and button loop.

Making The Bag

3. With a marking tool, mark the top center of your circle on each circle piece. From this mark, measure 10" down and mark, on both sides of circle.



4. On one short end of the center band, fold in $\frac{1}{2}$ " and iron. Sew closed.



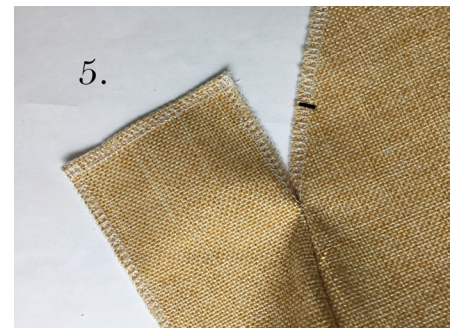
5. With right sides together, starting at one side mark, pin center band around the bag.



Sew band to bag, leaving 2" until the next mark.

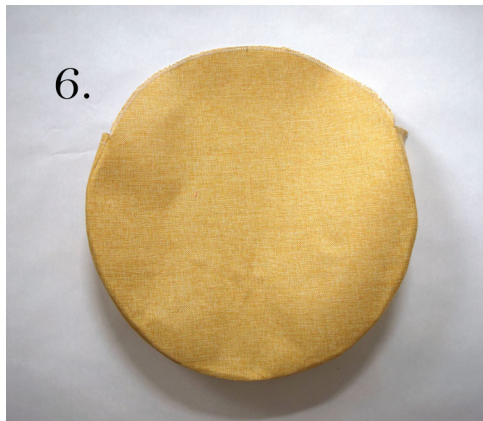


Trim the other end of your band, to 2.5". Fold in, iron and sew. Finish seam.

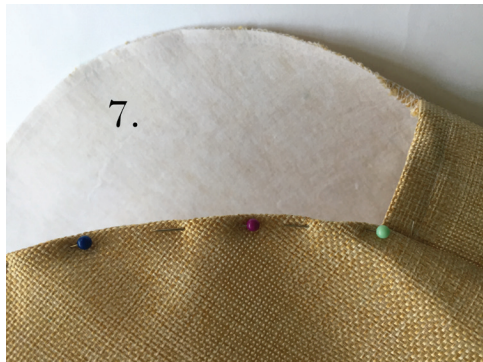


Making The Bag

6. Attach center band to other side, sew from mark to mark. Turn bag right-side out.



7. On the raw edge of the top of bag, Fold in to wrong side ¼" and iron. Sew seam close to edge.



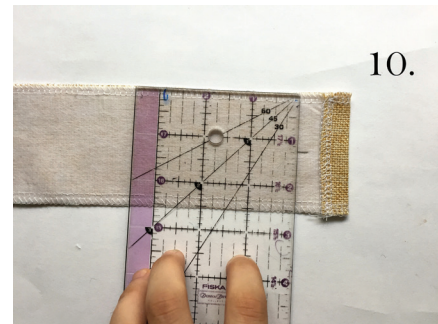
8. Take your top binding. Just like the center band, fold one short edge in ½" and sew. Attach top binding with right sides together stopping 2" before reaching end.



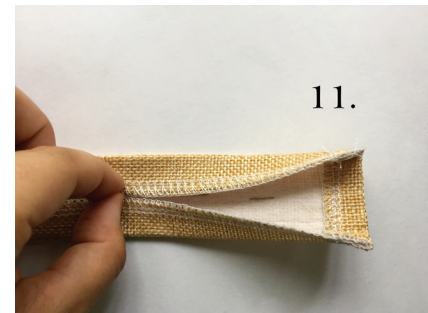
9. Trim, fold edge in ½", iron and sew other end of top binding. Fold remaining side in, ¼", and fold again, encasing the raw edge. Sew closed. Repeat for other side.



10. Make your straps! Fold in both short ends ½" and sew closed. Mark the center of each strap on wrong side.

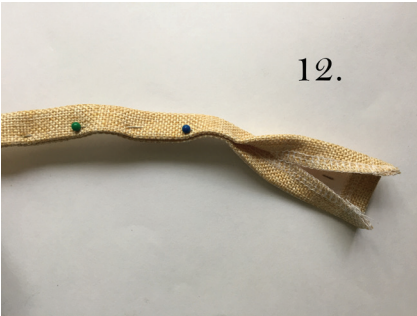


11. Fold each raw edge into the center line, then fold together, encasing the raw edge completely.



Making The Bag

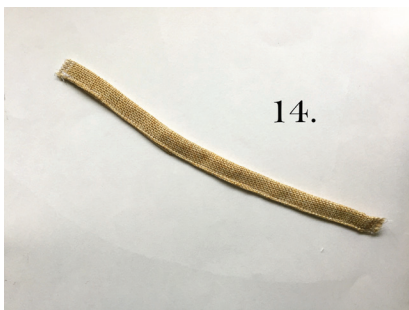
12. Pin, but leave both edges unpinned by 2". Sew straps. Repeat for second strap.



13. Attach strap to bag. From corner where top binding and bag side meet, measure up one inch and over three inches. This point is where to place the bottom right of strap. Pin and sew in place. Repeat for remaining three corners.



14. To make your button loop: Just as we did for the straps, fold end in and sew. Mark center of button loop fabric, fold ends into your mark and fold again, encasing raw edges. Sew.



15. On the inside of the back of your bag, mark the top center of your circle. Place your two loop edges at this mark, 1" down from top and sew.



16. Bring front and back bag together. Fold over loop to mark where to sew your button. Sew button on.



You are ready to tote your new bag to the beach or pool! I made my bag out of light gold burlap from Fabric.com, and made a Lime Burlap Bag for my mom!