

Embroidered Espadrilles

By Nancy Fiedler



Make a statement with your shoes! Dritz® Espadrilles kits comes in children's and adult sizes to make espadrilles. What fun you can have creating one of a kind shoes embroidered with your favorite designs.

Skill Level: Confident Beginner
Sewing Time: 6 hours
Finished Size: Size varies

Janome Supplies Required:

- Janome 15000, 14000, 500E, S-9
- Software that came with machine (Horizon Link Suite, or AcuTools)
- AcuSetter App (MC15000/Skyline S-9)
- Janome Blue tip needles
- Janome Red tip needles
- Janome Prewound bobbins
- Clear View Quilting Foot and Guide Set

Other Project Supplies:

- Dritz® Espadrilles kit
- Fabric and notions per kit requirements
- ¼ yard fusible knit interfacing
- Our project was embroidered with Heirloom Petals collection 12138, www.Janome-embroidery.com
- Terial Magic liquid stabilizer
- Assorted colors embroidery thread
- All-purpose thread

Fabric Preparation:

1. Saturate cover fabric with Terial Magic.
2. Hang dry 15-20 minutes.
3. Press dry.
4. If fabric is smaller than chosen hoop, sew strips of cutaway stabilizer around perimeter so that it will fit completely in hoop.
5. Trace shoe pattern on fabric with sharpie marker.
6. Place fabric in hoop so that toe shape is visible, lay plastic gridded template on top.



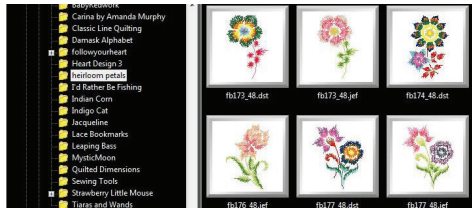
Preparing Embroidery File

At Computer:

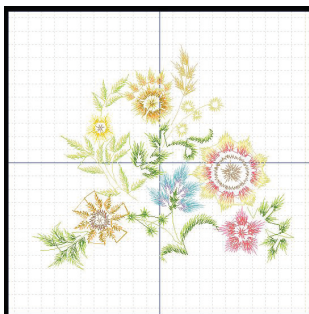
1. Open editing software on computer.
2. Select hoop to be used.
3. Insert designs.



4. Navigate to folder with desired designs.

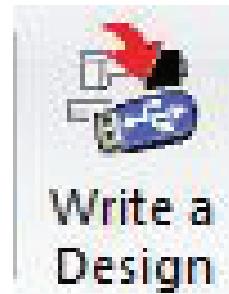


5. Refer to the gridded template already placed in hoop and layout embroidery designs to cover the shape.

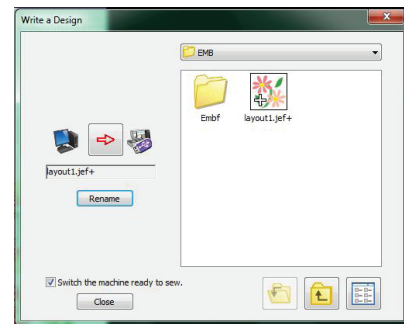


It is ok for the embroidery to extend beyond the pattern lines.

6. When layout is completed, write the design to USB stick.



7. Click "Rename" to give your design a name, then click the red arrow to save.



Note: For current generation embroidery machines, you can save the design in the "Emb" folder, create a new folder, or just save the design on the USB stick. For more information on writing and finding designs go to: <http://www.janome.com/en/blog/sewing-basics---where-is-my-embroidery-design/>

8. Repeat these steps for the heel.
If your design is symmetrical simply use it for both shoes. However, in our project the design was asymmetrical, so we created a right and left design. The back will be too long for any of the hoops, use the gridded template to determine what area to fill and create two designs. A printed template will be most helpful for putting the two designs together.

Setting up the Embroidery

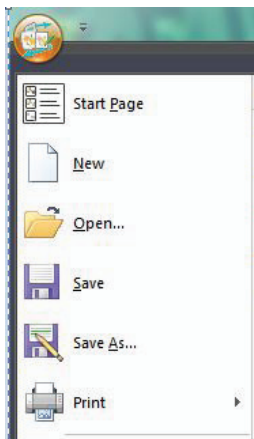
Printing Templates:

You may want to print a template of the design for a visual reference of the placement.

1. Click the Menu button > Print.



2. You will print a full-size template to help you with placement.

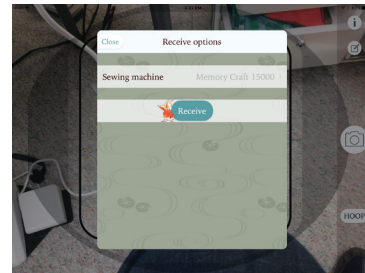


At Machine:

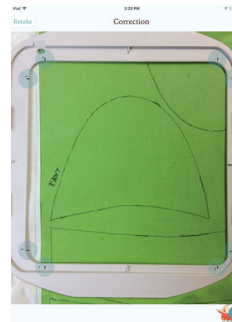
1. Set up the machine for professional style embroidery. Use the high-tension bobbin holder, straight stitch needle plate, and Janome Blue tip needle.
2. Open the design.

AcuSetter MC15000 or S-9 only:

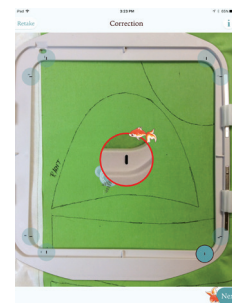
1. Open AcuSetter App on i-Pad.
2. Make sure you see your machine in the “Sewing Machine” line, then touch “Receive”.



3. Line up the image of the hoop on the screen with your hooped fabric and take a photo.



4. Touch each blue shaded button to line up the eight placement marks with the placement marks of the hoop. Then touch “Next”.



Embroidering the Shoe Base Fabric

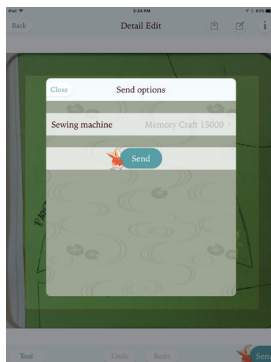
5. If necessary, use the red arrows to move the design so it lines up on the fabric in the desired position. Then touch “Next”.



6. For fine tuning the elements, touch the “Tool” button. Then touch the desired design you want to move, rotate, or resize.



7. Touch “Send” to send the design back to the machine.



At Machine:

1. Embroider all the pieces, then unhoop.
2. When all the embroidery is complete, replace the standard bobbin holder, insert Janome Red tip needle, use all-purpose thread, and attach Clear View Quilting foot.
3. Select straight stitch, Stitch Length 1.5mm.
4. Line up edge of foot with drawn cutting line, and sew a stabilizing stitch just to the inside of the cut line around each piece.



This will help prevent unraveling of embroidery when the pieces are cut.

Finishing:

1. Cut each embroidered piece on cutting line.



2. Following manufacturer’s directions, adhere fusible knit interfacing to the wrong side of each embroidered piece.
3. Follow kit directions to finish constructing the espadrilles.